

omni.net USB Plus - Quick Start Guide

Introduction

The intention of this Quick Start Guide (QSG) is to get you up and running with your omni.net USB Plus as soon and as easily as possible. To take advantage of more advanced features such as Bandwidth on Demand (BOD), ZyXEL recommends that you use the ISDN Utility function that came bundled on your CD - please refer to the User's Guide for details. The QSG also assumes you are using the default configurations (such as A-law Pulse Code Modulation (PCM)); therefore if you are experiencing difficulties please refer to Troubleshooting or your User's Guide.

Installation Requirements

To install the omni.net USB Plus you will need the following minimum system requirements:

- Microsoft Windows 98/ Me/2000.
- 20MB of free disk space for the driver and software.
- An ISDN basic rate S0 interface subscribed from your telecomm or PTT (Post, Telephone and Telegraph administration).
- A USB-equipped computer with a functioning USB controller.

Hardware Connections (see your User's guide for a diagram)

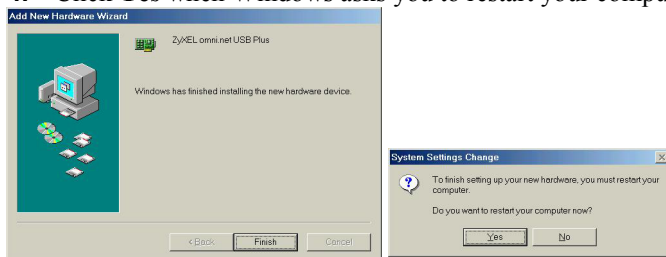
1. Use the ISDN cable to connect the omni.net USB Plus to the ISDN NT1 device.
2. Use the USB cable to connect the omni.net USB Plus to your computer or a self-powered USB hub device.

Installing Drivers with Windows 98 and Windows Me

1. Windows Plug and Play feature will take you to the **Add New Hardware Wizard** screen.
2. Insert the Bonus CD in your CD-ROM drive as requested, then follow the on-screen instructions.

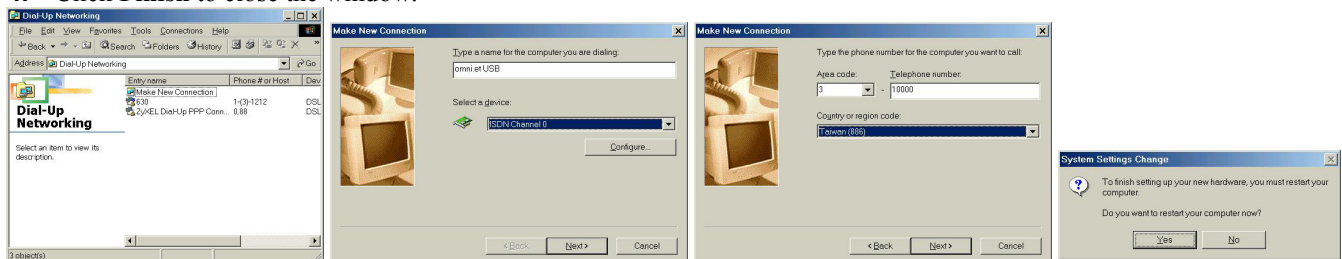


3. Windows copies CAPI driver files and the NDIS WAN Miniport driver to your computer. When done, click **Finish**.
4. Click **Yes** when Windows asks you to restart your computer to make the hardware settings change active.



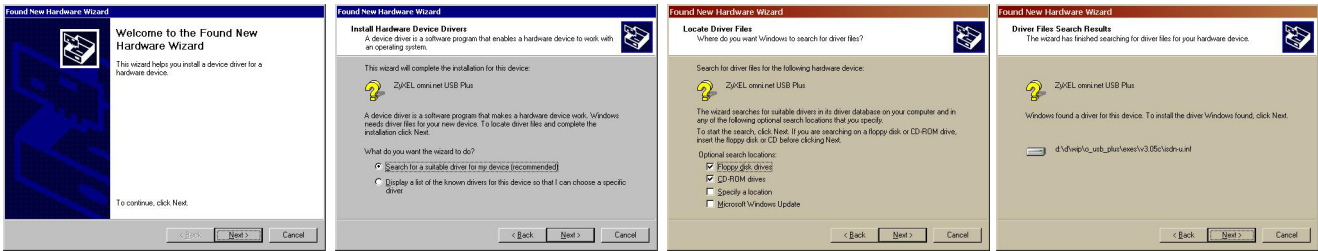
Create a Dial-up Networking Connection with Windows 98 and Windows Me

1. Double-click on **My Computer** on the Windows Desktop, and then double-click on **Dial-up Networking (Win 98)**. Click **Start, Settings** and then click **Dial-up Networking (Win Me)**.
2. Double-click on **Make New Connection** to start the **Make New Connection Wizard**.
3. Click **Next** to fill in the fields including the dial-up telephone number field, and choose **ISDN channel 0** in **Select a device list**.
4. Click **Finish** to close the window.



Installing Drivers with Windows 2000

1. Windows 2000's Plug and Play function displays the **Found New Hardware Wizard** screen. Click **Next >**.
2. Choose **Search for a suitable driver for my device**, then click **Next >**.
3. Choose **Specify a location**, then click **Next >**. Insert the CD-ROM that came with the package into your CD-ROM drive.
4. Select the CD-ROM drive check box. When Windows 2000 finds the INF file associated with omni.net USB Plus's drivers from the CD-ROM, click **Next >**.

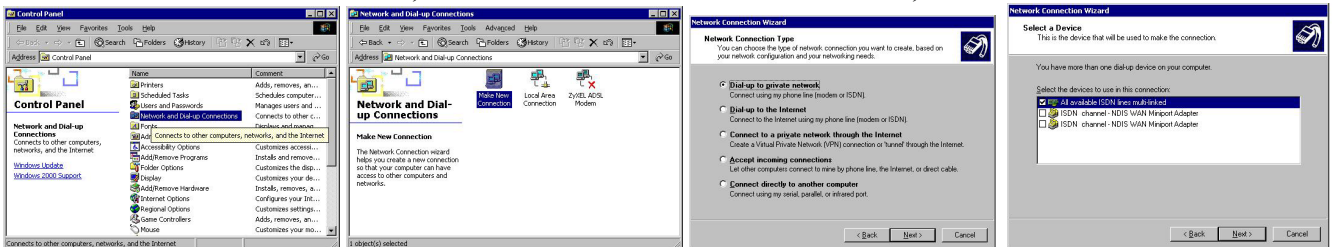


5. Ignore the **Digital Signature Not Found** messages periodically displayed, and press **Yes**.
6. Windows 2000 will copy the CAPI driver files and the NDIS WAN Miniport driver to your computer.
7. Click **Finish** when prompted.
8. Double-click on **Unplug/Eject** icon in the right corner of the Windows taskbar to display its dialog box.
9. Restart your computer to make the new settings active.

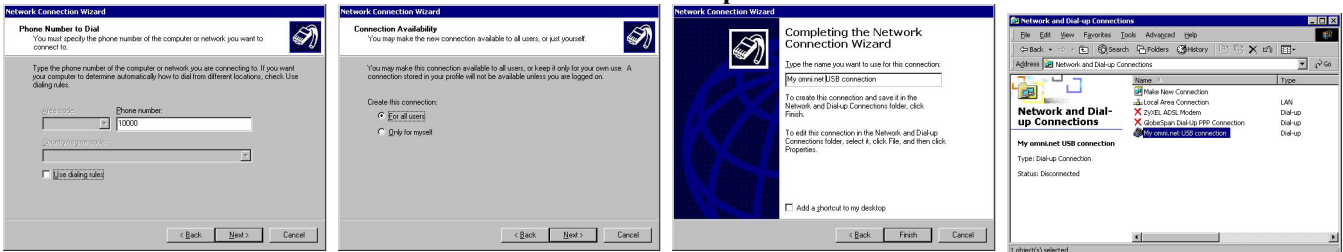


Create a Dial-up Networking Connection with Windows 2000

1. From Control Panel open **Network and Dial-up Connections**.
2. Double-click **Make New Connection**, and then click **Next >**.
3. Click **Dial-up to private network**, then click **Next >**.
4. To use multi-link PPP connection, select **All available ISDN lines multi-linked**, then click **Next >**.



5. Type the phone number you want to connect to, then click **Next >**.
6. Choose whether to make the connection available to all users or just you, then click **Next >**.
7. Type a name for this connection, then click **Finish**.
8. Your new connection is then listed in the **Network and Dial-up Connections** window.

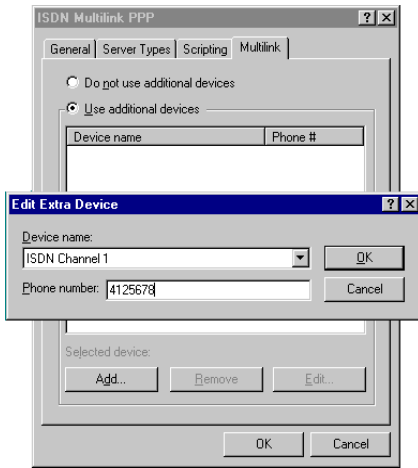


Using PPP Multilink

PPP Multilink is a bandwidth-on-demand protocol that can connect multiple links between two systems.

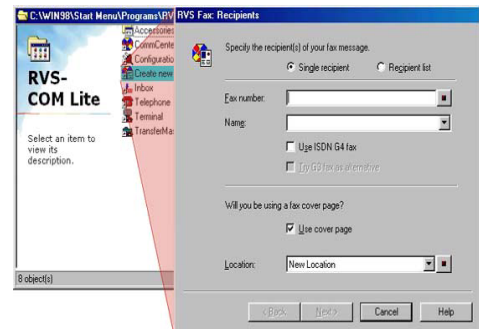
ZyXEL recommends that you use the ISDN Utility to configure this function. Please see your User's Guide.

1. To use Multilink, right-click on your new connection icon and choose **Properties**, then click on the **Multilink** tab.
2. Click the **Use Additional Devices** radio button and then click **Add** to add a second link.
3. Choose **ISDN channel 1** in the **Device name** list, enter the telephone number, then you can dial the Multilink connection.



FAX Setup

1. Insert your Bonus CD to install the bundled RVS-COM Lite software.
2. Fill in your phone number fields, and follow the on-screen instructions to finish **Configuration Wizard**.
3. To send a FAX, click on **Create new fax** in RVS-COM Lite to start editing your FAX.
4. Press **Send** to send your FAX.



Troubleshooting

ERROR - Quotes indicate an error message	POSSIBLE CAUSE	REMEDY
USB LED is not lit.	omni.net USB Plus is not ready.	Verify the USB connections.
The CAPI2032.DLL file does not start.	Computer is not USB-ready.	Download a utility from http://www.usb.org/usbready.exe to examine your computer's hardware and software.
The B1 LED is lit at start-up.	RAM not functioning properly.	Consult your retailer.
The B2 LED is lit at start-up.	ISDN chip not functioning properly.	Consult your retailer.
"You are not allowed to run this program."	CAPI2032.DLL file is not from the ISDN package.	Uninstall and then reinstall omni.net USB Plus driver.
"A required .DLL file, CAPI2032.DLL, was not found."	CAPI2032.DLL is missing.	Uninstall and then reinstall omni.net USB Plus driver.
"The CAPI driver is not loaded."	Registration key has been destroyed.	Uninstall and then reinstall omni.net USB Plus driver.
"Please Input your own number."	Subscriber number of your own ISDN line has not been entered.	Key in subscriber number of your ISDN line in <i>Own ISDN Number</i> box.
"Cannot activate ISDN ("ISDN" LED always OFF)"	ISDN line is not connected.	Verify ISDN line/RJ-45 jack connection.
"Connection failure (error code = xxxx)"	Other devices on same ISDN line are occupying B channel. <i>Own ISDN Number</i> is wrong. ISDN protocol wrong.	Verify ISDN number. Verify no other devices occupy same ISDN line or B channel. Verify ISDN protocol configuration.
"Data transfer error"	ISDN line not in good condition	Check ISDN line.

CE and FC Certifications

For more information about your device's Declaration of Conformity (DOC) please refer to www.zyxel.com