

Vantage Access

Support Notes

Version 1.00

Oct. 2006



INDEX

| | |
|---|-----------|
| Basic Application Notes | 1 |
| Vantage Access System Deployment | 1 |
| Install/Uninstall Vantage Access System | 1 |
| Install/Un-install HTTP Server | 10 |
| Enable/Setup Vantage Function on ZyXEL Devices | 16 |
| Configure HTTP Server | 18 |
| Device Management | 18 |
| Device Configuration..... | 18 |
| How to associate a device with a user?..... | 19 |
| How to add a group to Topology?..... | 20 |
| How to add a device to a specific group? | 21 |
| How to check device time in Vantage CNM server? | 22 |
| How to do device group configuration?..... | 22 |
| Firmware/Configuration Files Management..... | 25 |
| How to create user account? | 29 |
| Advanced Application Notes | 31 |
| Application for MSSP..... | 31 |
| Trouble Shooting | 33 |
| Why Vantage Access server starts so slowly?..... | 33 |
| FAQ | 33 |
| Product FAQ | 33 |
| Q1: What is Vantage Access?..... | 33 |
| Q2: How many devices can Vantage Access server support? | 34 |
| Q3: How many user types does Vantage Access support?..... | 34 |
| Q4: How to login Vantage Access server?..... | 36 |

Basic Application Notes

Vantage Access System Deployment

Install/Uninstall Vantage Access System

• Installation of Database under Text Mode

1. Let's suppose Vantage_Access_DB.bin locates in the home directory of OS. Please issue the following command to extract it.

```
[root@localhost #] chmod +x Vantage_Access_DB.bin  
[root@localhost #] ./Vantage_Access_DB.bin -i console
```

2. Begin Installation of DB file. In this step you should press <enter> to continue installation.

```
Preparing to install...  
Extracting the JRE from the installer archive...  
Unpacking the JRE...  
Extracting the installation resources from the installer archive...  
Configuring the installer for this system's environment...  
  
Launching installer...  
  
Preparing CONSOLE Mode Installation...  
  
===== (created with InstallAnywhere by Zero G) =====  
  
-----  
  
-----  
Introduction:Before You Begin  
-----  
  
InstallAnywhere will guide you through the installation of My_Product.  
  
It is strongly recommended that you quit all programs before continuing with  
this installation.  
You should uninstall any existing MySQL servers on the computer that you will  
install tr069 DataBase, and remove /etc/my.cnf.  
Respond to each prompt to proceed to the next step in the installation. If you  
want to change something on a previous step, type 'back'.  
  
You may cancel this installation at any time by typing 'quit'.  
  
PRESS <ENTER> TO CONTINUE: █
```

3. Determine the directory to install database. The default directory is /usr/local/Tr069_db. You can input customized directory for DB installation.

```
=====
Introduction:Before You Begin
-----

InstallAnywhere will guide you through the installation of Vantage Access DB.

It is strongly recommended that you quit all programs before continuing with
this installation.
You should uninstall any existing MySQL servers on the computer that you will
install tr069 DataBase, and remove /etc/my.cnf.
Respond to each prompt to proceed to the next step in the installation.  If you
want to change something on a previous step, type 'back'.

You may cancel this installation at any time by typing 'quit'.

PRESS <ENTER> TO CONTINUE:

=====
Choose the Installation Folder and Path
-----

Select a folder in which you would like to install tr069 DataBase. Spaces in
the folder name or path are not allowed.

Where would you like to install?

  Default Install Folder: /usr/local/Tr069_db

ENTER AN ABSOLUTE PATH, OR PRESS <ENTER> TO ACCEPT THE DEFAULT
:  
```

4. Choose appropriate directory to create links for database.

```
ENTER AN ABSOLUTE PATH, OR PRESS <ENTER> TO ACCEPT THE DEFAULT
:

=====
Choose Link Location
-----

Where would you like to create tr069 DataBase shortcut?

->1- Default: /root
  2- In your home folder
  3- Choose another location...

  4- Don't create links

ENTER THE NUMBER OF AN OPTION ABOVE, OR PRESS <ENTER> TO ACCEPT THE DEFAULT
:

=====
Pre-Installation Summary
-----

Please Review the Following Before Continuing:

Product Name:
  Vantage Access DB

Install Folder:
  /usr/local/Tr069_db
```

5. Review installation information and begin to install database.

```
Install Folder:
  /usr/local/Tr069_db

Link Folder:
  /root

Disk Space Information (for Installation Target):
  Required: 71,368,410 bytes
  Available: 1,315,610,624 bytes

PRESS <ENTER> TO CONTINUE:

=====
Installing...
-----

[=====|=====|=====|=====]
[-----|-----|-----|-----]

=====
Installation Complete
-----

Congratulations. Vantage Access DB has been successfully installed to:

/usr/local/Tr069_db
Press "enter" to quit the installer.

PRESS <ENTER> TO EXIT THE INSTALLER: █
```

6. Finish installation of database.

```
Disk Space Information (for Installation Target):
  Required: 71,368,410 bytes
  Available: 1,315,610,624 bytes

PRESS <ENTER> TO CONTINUE:

=====
Installing...
-----

[=====|=====|=====|=====]
[-----|-----|-----|-----]

=====
Installation Complete
-----

Congratulations. Vantage Access DB has been successfully installed to:

/usr/local/Tr069_db
Press "enter" to quit the installer.

PRESS <ENTER> TO EXIT THE INSTALLER:
[root@localhost root]# ls -la LaunchVantageAccess_DB StopVantageAccess_DB
lrwxrwxrwx 1 root root 28 May 9 23:53 LaunchVantageAccess_DB -> /usr/local/Tr069_
db/start.sh
lrwxrwxrwx 1 root root 27 May 9 23:53 StopVantageAccess_DB -> /usr/local/Tr069_db
/stop.sh
[root@localhost root]# █
```

- **Un-installation of DB under Text Mode**

1. Go to find Uninstall_Vantage_Access_DB and issue following command to run it. It is under Uninstall_Vantage\Access\DB directory by default.

[root@localhost #] ./Uninstall_Vantage_Access_DB -i console

```
[root@localhost Tr069_db]# cd Uninstall_Vantage\ Access\ DB/
[root@localhost Uninstall_Vantage Access DB]# ls
InstallScript.iap_xml      uninstaller.jar            Uninstall_Vantage_Access_DB.lax
installvariables.properties Uninstall_Vantage_Access_DB
[root@localhost Uninstall_Vantage Access DB]# ./Uninstall_Vantage_Access_DB -i console
Preparing CONSOLE Mode Installation...

=====
                                (created with InstallAnywhere by Zero G)
-----

=====
Uninstalling Vantage Access DB
-----

About to uninstall...

Vantage Access DB

You should back up your tr069 system before uninstalling.tr069 system backup
(Data Maintenance) includes all device configurations done in tr069, logs and
all files uploaded to tr069.

Are you sure you want to continue?

Respond to each prompt to proceed to the next step in the installation.  If you
want to change something on a previous step, type 'back'.
You may cancel this installation at any time by typing 'quit'.

PRESS <ENTER> TO CONTINUE: █
```

```
Uninstalling...
-----

...*
*
*****
*****
*****
*****
...*
*
*****
*****
*****
*****
...*
*
*****
*****
*****
*****
...*
*
*****
*****
*****
*****
*****

=====
```

```
*
*****
*****
*****
*****
...*
*
*****
*****
*****
*****
...*
*
*****
*****
*****
*****
...*
*
*****
*****
*****
*****
*****

=====
Uninstall Complete
-----

All items were successfully uninstalled.

[root@localhost Uninstall_Vantage_Access_DB]#
```

• **Installation Vantage Access BED under Text Mode**

1. Extract Vantage Access BED file

Let's suppose Vantage_Access_BED.bin locates in the home directory of OS. Please issue the following command to extract it.

```
[root@localhost #] chmod +x Vantage_Access_BED.bin  
[root@localhost #]./Vantage_Access_BED.bin -i console
```

2. Begin Installation of BED file. In this step you should press <enter> to continue installation.

```
Preparing CONSOLE Mode Installation...  
-----  
                                     (created with InstallAny  
-----  
-----  
Introduction  
-----  
InstallAnywhere will guide you through the installation of Vant  
It is strongly recommended that you quit all programs before co  
this installation.  
Respond to each prompt to proceed to the next step in the insta  
want to change something on a previous step, type 'back'.  
You may cancel this installation at any time by typing 'quit'.  
PRESS <ENTER> TO CONTINUE: █
```

3. Select appropriate folder to install BED file. The sample below chooses default folder to install BED file.


```
It is strongly recommended that you quit all programs before continuing
this installation.

Respond to each prompt to proceed to the next step in the installation.
want to change something on a previous step, type 'back'.

You may cancel this installation at any time by typing 'quit'.

PRESS <ENTER> TO CONTINUE:

=====
Choose Install Folder
-----

Select a folder which you would like to install Vantage Access BED.

Where would you like to install?

  Default Install Folder: /usr/local/Tr069_bed

ENTER AN ABSOLUTE PATH, OR PRESS <ENTER> TO ACCEPT THE DEFAULT
: /usr/selina/Tr069_bed
```

3. Choose appropriate directory to create links for Vantage Access BED.

There are four options you can select. The sample bellow selects the first item.

```
Default Install Folder: /usr/local/Tr069_bed

ENTER AN ABSOLUTE PATH, OR PRESS <ENTER> TO ACCEPT THE DEFAULT
: /usr/selina/Tr069_bed

INSTALL FOLDER IS: /usr/selina/Tr069_bed
IS THIS CORRECT? (Y/N): y

=====
Choose Link Location
-----

Where would you like to create links?

->1- Default: /root
  2- In your home folder
  3- Choose another location...

  4- Don't create links

ENTER THE NUMBER OF AN OPTION ABOVE, OR PRESS <ENTER> TO ACCEPT
: 1
```

4. Enter Vantage Access database's IP address.

```
=====
Choose Link Location
-----

Where would you like to create links?

->1- Default: /root
   2- In your home folder
   3- Choose another location...

   4- Don't create links

ENTER THE NUMBER OF AN OPTION ABOVE, OR PRESS <ENTER> TO ACCEPT T
: 1

=====
Entering DB Address
-----

Please entering DB address

DB Address (DEFAULT: ): 172.25.21.145█
```

Note: Please make sure the IP address of database before installing the Vantage Access. Or you should go to /tr069_bed/tr069/conf/tr069.conf/tr069_bed/start.sh to determine item 'DB_HOST' which denotes IP address of database before starting the Vantage Access server.

5. Review the installation information.

```
=====
Pre-Installation Summary
-----

Please Review the Following Before Continuing:

Product Name:
  Vantage Access BED

Install Folder:
  /usr/selina/Tr069_bed

Link Folder:
  /root

DB Address:
  172.25.21.145

Disk Space Information (for Installation Target):
  Required: 98,633,556 bytes
  Available: 58,245,492,736 bytes

PRESS <ENTER> TO CONTINUE: █
```

7. Finish installation of Vantage Access.

```
/usr/selina/Tr069_bed
PRESS <ENTER> TO INSTALL:

=====
Installing...
-----

[=====|=====|=====]
[-----|-----|-----]

=====
Installation Complete
-----

Congratulations. Vantage Access BED has been successful.

  /usr/selina/Tr069_bed
PRESS <ENTER> TO EXIT THE INSTALLER: █
```

• Un-installation of Vantage Access BED under Text Mode

1. Go to find Uninstall_Tr069_BED and issue following command to run it.

```
[root@localhost #] ./Uninstall_Tr069_BED -i console
```

```
installvariables.properties  Uninstall_Vantage_Access_BED.lax
uninstaller.jar
[root@localhost Uninstall Vantage Access BED]# ./Uninstall_Vantage_Access_BED
Preparing CONSOLE Mode Installation...

=====
                                     (created with InstallAnywhere by Zero
-----

=====
Uninstall Vantage Access BED
-----

About to uninstall...

Vantage Access BED

This will remove features installed by InstallAnywhere.  It will not remove
files and folders created after the installation.

PRESS <ENTER> TO CONTINUE: █
```

Note: Un-installation process will remove all files installed by InstallAnywhere. It will not remove files and folders created after the installation.

2. When un-installation succeeds, system will show 'Uninstall Complete'.

```
*****
*****
...*
*
*****
*****
*****
*****
...*
*
*****
*****
*****
*****

=====
Uninstall Complete
-----

All items were successfully uninstalled.

[root@localhost Uninstall Vantage Access BED]# █
```

Install/Un-install HTTP Server

• **Installation of Vantage Access HTTPD under Text Mode**

1. Extract Vantage Access HTTPD file

Suppose Vantage_Access_HTTPD.bin file is under the home directory of OS. Please issue following command to extract the Vantage files.

```
[root@localhost #] chmod +x Vantage_Access_HTTPD.bin
```

```
[root@localhost #]./Vantage_Access_HTTPD.bin -i console
```

```
[root@localhost Tr069_httpd_Build_Output]# ls
Web_Installers
[root@localhost Tr069_httpd_Build_Output]# cd Web_Installers/
[root@localhost Web_Installers]# ls
install.htm  InstData
[root@localhost Web_Installers]# cd InstData/
[root@localhost InstData]# ls
os  images  Linux  WebInst.cab  WebInst.jar
[root@localhost InstData]# cd Linux/
[root@localhost Linux]# ls
VM
[root@localhost Linux]# cd VM
[root@localhost VM]# ls
Vantage_Access_HTTPD.bin
[root@localhost VM]# ./Vantage_Access_HTTPD.bin -i console
Preparing to install...
Extracting the JRE from the installer archive...
Unpacking the JRE...
Extracting the installation resources from the installer archive...
Configuring the installer for this system's environment...

Launching installer...
█
```

2. Begin installation of HTTPD. Please <enter> to continue the process.

```
Preparing CONSOLE Mode Installation...
=====
                                     (created with InstallAnywhere by Zero G)
=====

Introduction
-----

InstallAnywhere will guide you through the installation of Tr069_httpd.

It is strongly recommended that you quit all programs before continuing with
this installation.

Click the 'Next' button to proceed to the next screen. If you want to change
something on a previous screen, click the 'Previous' button.

You may cancel this installation at any time by clicking the 'Cancel' button.

PRESS <ENTER> TO CONTINUE: █
```

3. Determine the directory to install HTTPD. The default the directory is /usr/local/Tr069_httpd.

```
It is strongly recommended that you quit all programs before continuing with
this installation.

Click the 'Next' button to proceed to the next screen. If you want to change
something on a previous screen, click the 'Previous' button.

You may cancel this installation at any time by clicking the 'Cancel' button.

PRESS <ENTER> TO CONTINUE:

=====
Choose the Installation Folder and Path
=====

Select a folder in which you would like to install Vantage FW Server.

Where would you like to install?

  Default Install Folder: /usr/local/Tr069_httpd

ENTER AN ABSOLUTE PATH, OR PRESS <ENTER> TO ACCEPT THE DEFAULT
  : /var/Tr069_httpd
```

4. Determine the directory to create links for HTTP server.

```
Default Install Folder: /usr/local/Tr069_httpd

ENTER AN ABSOLUTE PATH, OR PRESS <ENTER> TO ACCEPT THE DEFAULT
  : /var/Tr069_httpd

INSTALL FOLDER IS: /var/Tr069_httpd
  IS THIS CORRECT? (Y/N): y

=====
Choose Link Location
=====

Where would you like to create links for Vantage FW Server?

->1- Default: /root
   2- In your home folder
   3- Choose another location...

   4- Don't create links

ENTER THE NUMBER OF AN OPTION ABOVE, OR PRESS <ENTER> TO ACCEPT THE DEFAULT
  : 1
```

5. Determine the username and Password for HTTP server authentication.

```
      : 1

=====
Entering username
-----

Please entering username for Vantage Access HTTPD. Valid characters include a-z,
A-Z 0-9. Default value is "zyxel".

Username (DEFAULT: zyxel): selina

=====
Enter password
-----

Please entering password for Vantage Access HTTPD, Valid characters include a-z,
A-Z 0-9. Default value is "1234".

Password (DEFAULT: 1234): 123456█
```

Note: Please remember the username/password of HTTP Server after you install the server.

6. Review the installation information.

```
=====
Pre-Installation Summary
-----

Please Review the Following Before Continuing:

Product Name:
  Tr069_httpd

Install Folder:
  /var/Tr069_httpd

Link Folder:
  /root

Disk Space Information (for Installation Target):
  Required: 79,164,642 bytes
  Available: 2,015,547,392 bytes

PRESS <ENTER> TO CONTINUE: █
```

7. Installation process.

```
Product Name:
  Tr069_httpd

Install Folder:
  /var/Tr069_httpd

Link Folder:
  /root

Disk Space Information (for Installation Target):
  Required:  79,164,642 bytes
  Available: 2,015,547,392 bytes

PRESS <ENTER> TO CONTINUE:

=====
Installing...
-----

[=====|=====|=====|=====]
[-----|-----|-----|-----]
```

8. Installation Successful information.

```
=====
Installing...
-----

[=====|=====|=====|=====]
[-----|-----|-----|-----]

=====
Installation Complete
-----

Congratulations. Tr069_httpd has been successfully installed to:
/var/Tr069_httpd

Recommend, reboot your computer!

PRESS <ENTER> TO EXIT THE INSTALLER:
[root@localhost VM]#
```

• Vantage Access HTTPD Un-installation in Text Mode

- 1. Go to find in Uninstall_Tr069_httpd file and issue following command to execute

Uninstall_Tr069_httpd.

[root@localhost #]./Uninstall_Tr069_httpd -i console

```
InstallScript.iap_xml      uninstaller.jar      Uninstall_Tr069_httpd.lax
installvariables.properties Uninstall_Tr069_httpd
[root@localhost Uninstall_Tr069_httpd]# ./Uninstall_Tr069_httpd -i console
Preparing CONSOLE Mode Installation...

=====
                                  (created with InstallAnywhere by Zero G)
-----

Uninstall Tr069_httpd
-----

About to uninstall...

Tr069_httpd

This will remove features installed by InstallAnywhere.  It will not remove
files and folders created after the installation.

PRESS <ENTER> TO CONTINUE: █
```

Note: Un-installation process will remove all files installed by InstallAnywhere. It will not remove files and folders created after the installation.

2. When un-installation succeeds, system will show 'Uninstall Complete'.

```
*****
*****
...*
*
*****
*****
*****
*****
...*
*
*****
*****
*****
*****

=====
Uninstall Complete
-----

All items were successfully uninstalled.

[root@localhost Uninstall_Tr069_httpd]# █
```

Enable/Setup Vantage Function on ZyXEL Devices

1. Initialization on CPE. You can telnet to ZyXEL device and enter SMT menu 24.8 issue following CI commands to activate the CPE for Vantage Access.

```
RAS> wan tr069 load
```

```
RAS> wan tr069 acsUrl 172.25.21.68
```

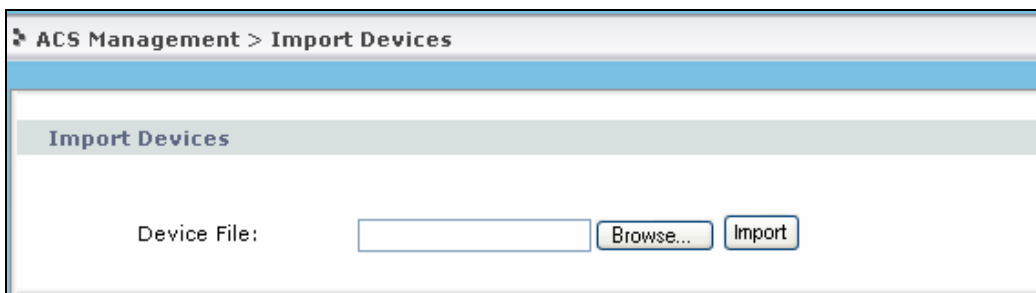
```
RAS> wan tr069 active 1
```

```
RAS> wan tr069 save
```

Here 172.25.21.68 is the IP address of Vantage Access.

NOTE: If the Vantage Access server is behind NAT/ firewall, you should forward TCP port 80 in NAT/Firewall setup.

2. Registration on Vantage Access Server. Please go to **ACS Management>>Import Devices** to import device to Vantage Access Server. Please choose .xml file to import the device.



The similar .xml sample displays is like following. You can customize the **MAC** and **device Type** as you want.

```
<?xml version="1.0" encoding="UTF-8" ?>
- <Template xmlns:xsi="http://www.w3.org/2001/XMLSchema-instance">
- <Device>
  <deviceName>001349777777</deviceName>
  <MAC>001349777777</MAC>
  <deviceType>P-2602HW-D1A</deviceType>
</Device>
</Template>
```

Also you can import more than one device at the same time by extending the .xml file with the similar unit.

Please find the .xml sample below.

```
<?xml version="1.0" encoding="UTF-8" ?>
- <Template xmlns:xsi="http://www.w3.org/2001/XMLSchema-instance"
- <Device>
  <deviceName>001340900001</deviceName>
  <MAC>001340900001</MAC>
  <deviceType>P-2602HW-D1A</deviceType>
</Device>
- <Device>
  <deviceName>001340900002</deviceName>
  <MAC>001340900002</MAC>
  <deviceType>P-2602HW-D1A</deviceType>
</Device>
- <Device>
  <deviceName>001340900003</deviceName>
  <MAC>001340900003</MAC>
  <deviceType>P-2602HW-D1A</deviceType>
</Device>
- <Device>
  <deviceName>001340900004</deviceName>
  <MAC>001340900004</MAC>
  <deviceType>P-2602HW-D1A</deviceType>
</Device>
- <Device>
  <deviceName>001340900005</deviceName>
  <MAC>001340900005</MAC>
  <deviceType>P-2602HW-D1A</deviceType>
</Device>
- <Device>
  <deviceName>001340900006</deviceName>
  <MAC>001340900006</MAC>
  <deviceType>P-2602HW-D1A</deviceType>
</Device>
- <Device>
  <deviceName>001340900007</deviceName>
  <MAC>001340900007</MAC>
  <deviceType>P-2602HW-D1A</deviceType>
</Device>
- <Device>
  <deviceName>001340900008</deviceName>
  <MAC>001340900008</MAC>
  <deviceType>P-2602HW-D1A</deviceType>
</Device>
- <Device>
  <deviceName>001340900009</deviceName>
  <MAC>001340900009</MAC>
  <deviceType>P-2602HW-D1A</deviceType>
</Device>
- <Device>
  <deviceName>00134090000a</deviceName>
  <MAC>00134090000a</MAC>
  <deviceType>P-2602HW-D1A</deviceType>
</Device>
- <Device>
  <deviceName>00134090000b</deviceName>
  <MAC>00134090000b</MAC>
  <deviceType>P-2602HW-D1A</deviceType>
</Device>
- <Device>
  <deviceName>00134090000c</deviceName>
  <MAC>00134090000c</MAC>
  <deviceType>P-2602HW-D1A</deviceType>
</Device>
- <Device>
  <deviceName>00134090000d</deviceName>
  <MAC>00134090000d</MAC>
  <deviceType>P-2602HW-D1A</deviceType>
</Device>
- <Device>
  <deviceName>00134090000e</deviceName>
  <MAC>00134090000e</MAC>
  <deviceType>P-2602HW-D1A</deviceType>
</Device>
- <Device>
  <deviceName>00134090000f</deviceName>
  <MAC>00134090000f</MAC>
  <deviceType>P-2602HW-D1A</deviceType>
</Device>
</Template>
```

Configure HTTP Server

Vantage Access provides HTTP Server for uploading and downloading firmware of CPE. Please go to **ACS Management>>HTTP Server** to set this server. You are needed to input corresponding **IP address**, **User Name** and **Password** of HTTP Server.

Note: Please remember **User Name** and **Password** after you install HTTP Server. And the default **User Name/Password** is zyxel/1234.

ACS Management > HTTP Server

HTTP Server

IP Address: *

User Name: *

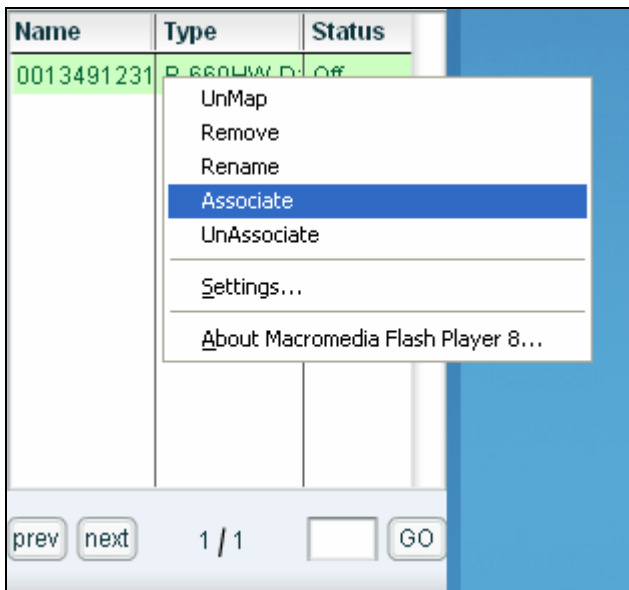
Password: *

.....

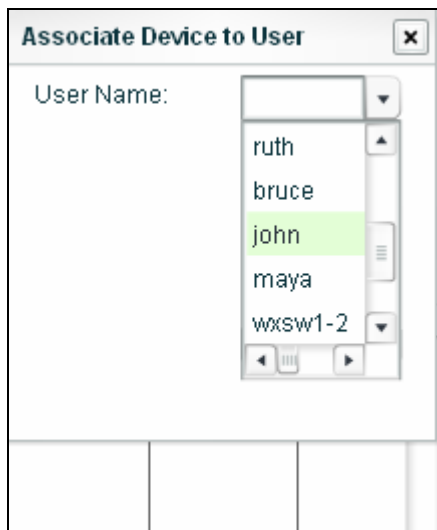
Device Management

Device Configuration

How to associate a device with a user?



1. Go to **Device List**. After determining a specific device, please right click.
2. Choose **Associate** menu.
3. Select the user in the drop down list for your CPE in the **Associate Device to User** window.



4. You can check the result in the Device List window.

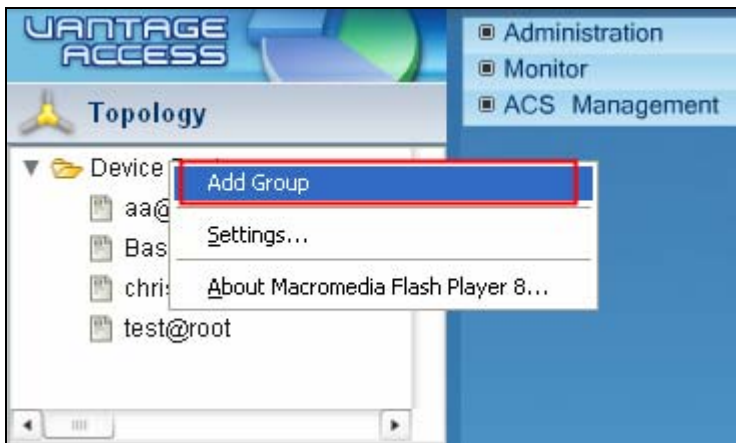
| Device List | | | | | | |
|-------------|--------------|--------------|-------------|------------------|--------|-------|
| Index | Device Name | MAC | Device Type | Software Version | Status | Owner |
| 1 | 001349123123 | 001349123123 | P-660HW-D1 | V3.40(ALG.0)b2 | Off | john |

1/1

How to add a group to Topology?

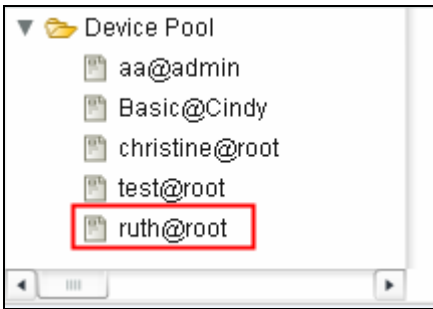
Vantage Access supports group management. You could add the device with the same type into one group for future management.

Please go to **Device Pool** and right click. Choose **Add group** in menu.



You can enter group **Name** in the Add Group window.

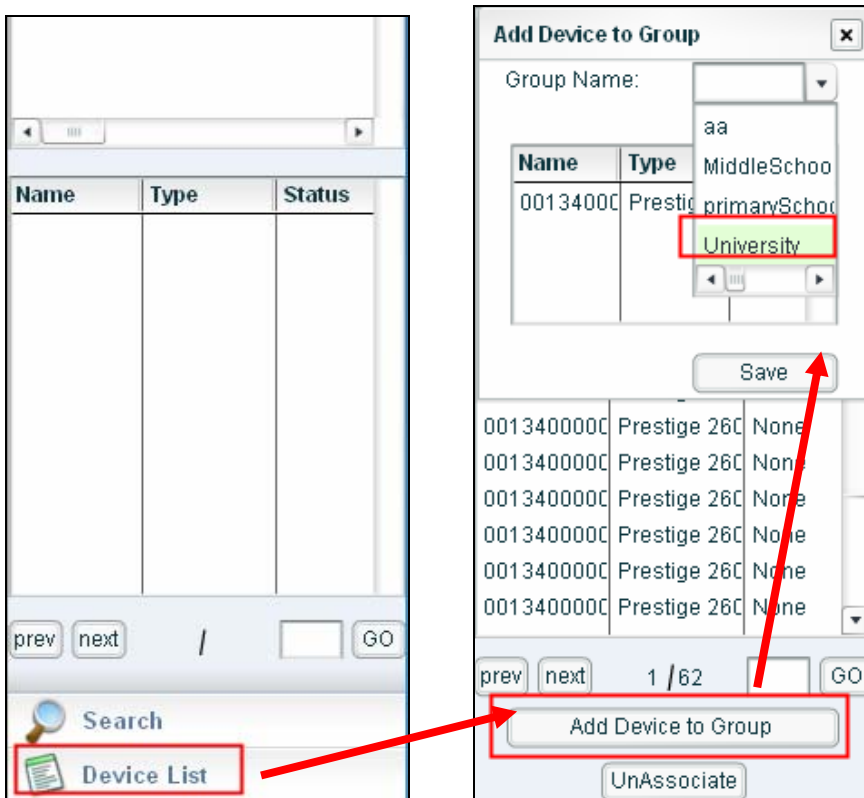




All users can create group for their own purpose. If you create group when you login as root user, detailed information will be listed under **Device Pool**. For example, there's a group named ruth@root and this means this group is created under user root.

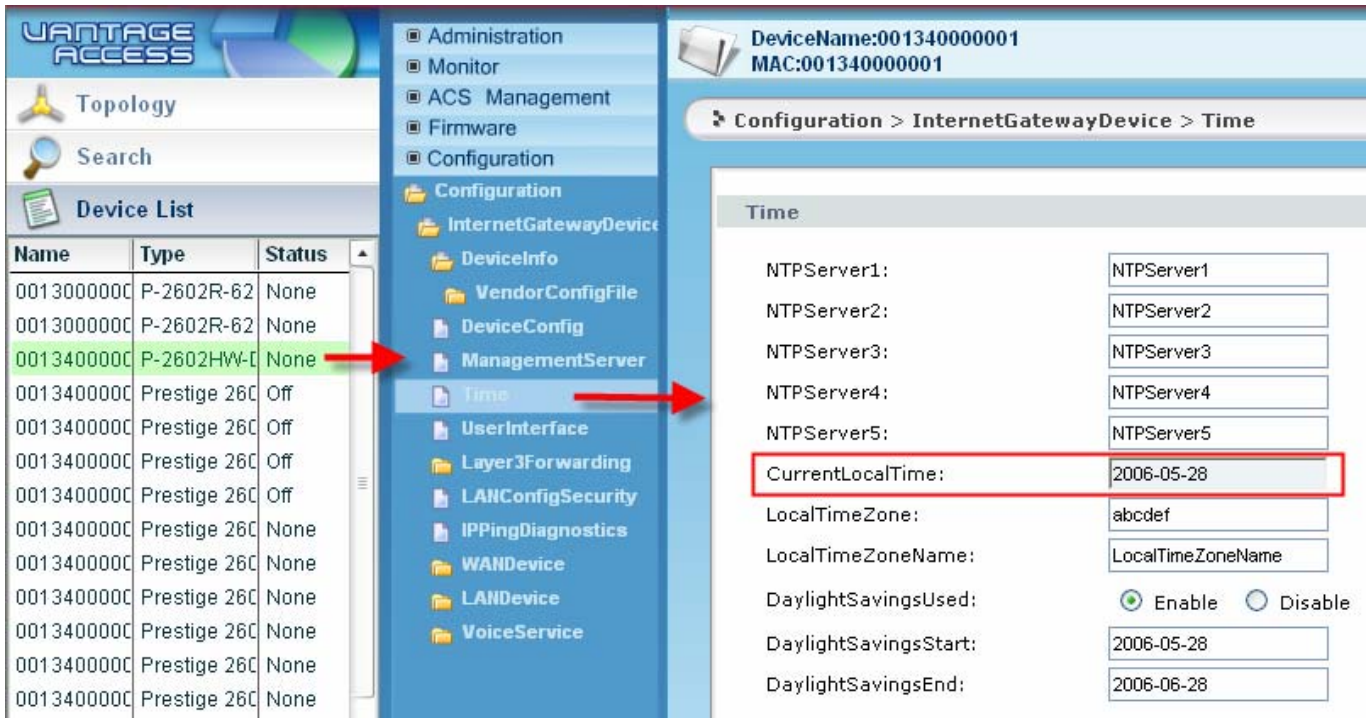
How to add a device to a specific group?

- 1. Please select a device from **Device List**. And then go to click **Add Device to Group**.
- 2. Determine the group you want to join in.



How to check device time in Vantage CNM server?

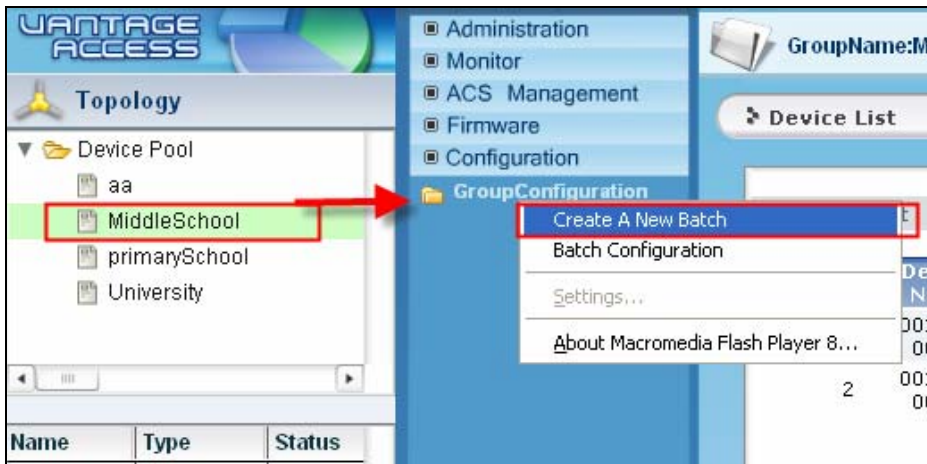
1. Please select a device from the **Device List**.
2. Go to menu **Configuration>> Configuration>>Internet GatewayDevice>>Time** to get the time information for the device selected.



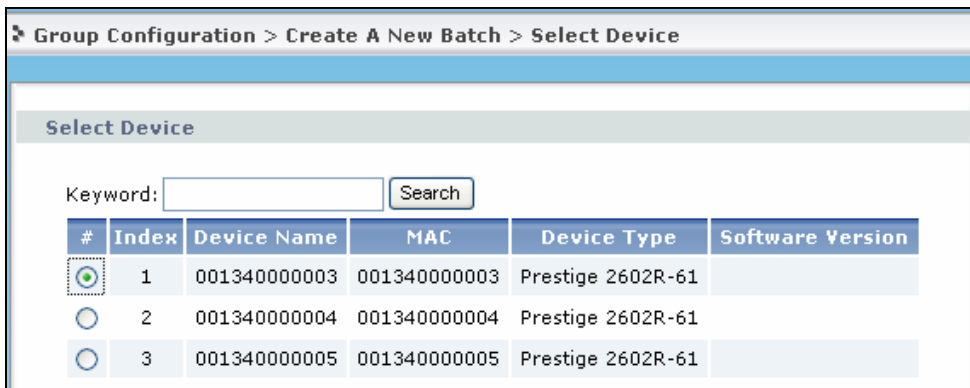
Note: You can only check the device status or do device configuration when you login in as manager user.

How to do device group configuration?

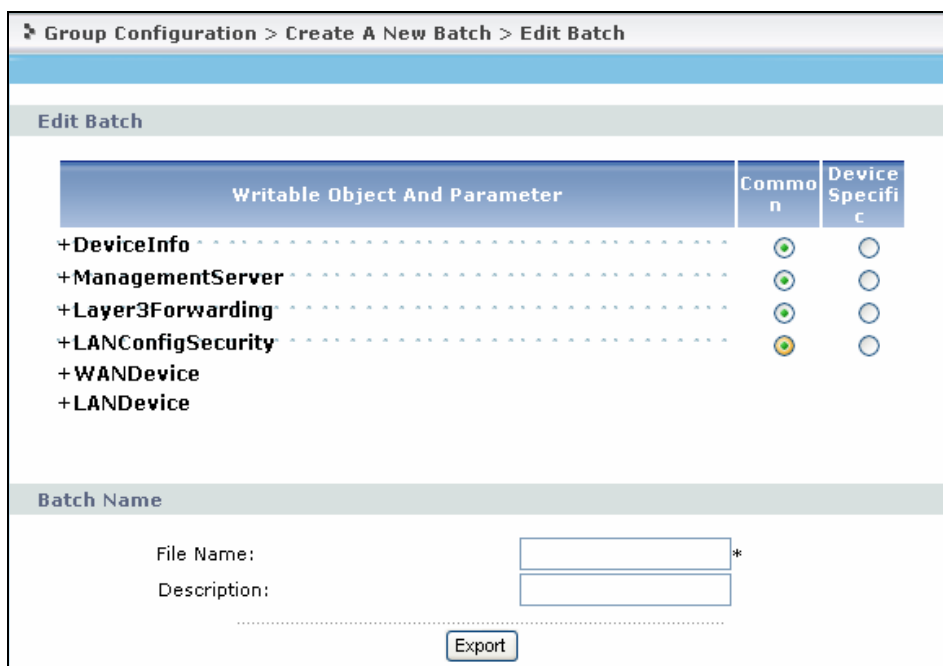
1. Select a group from Device Pool. And right click the **GroupConfiguration** under menu **Configuration**.



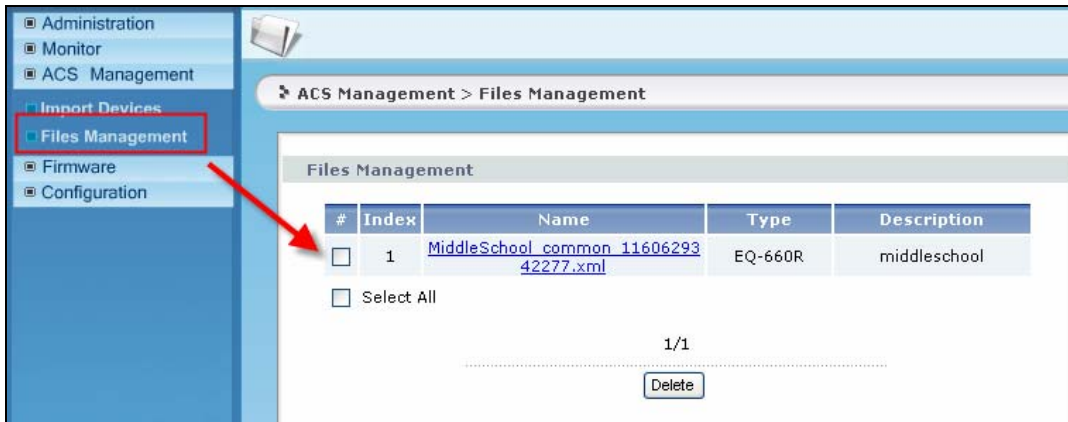
2. Take one device's configuration as configuration template to **Create A New Batch**.



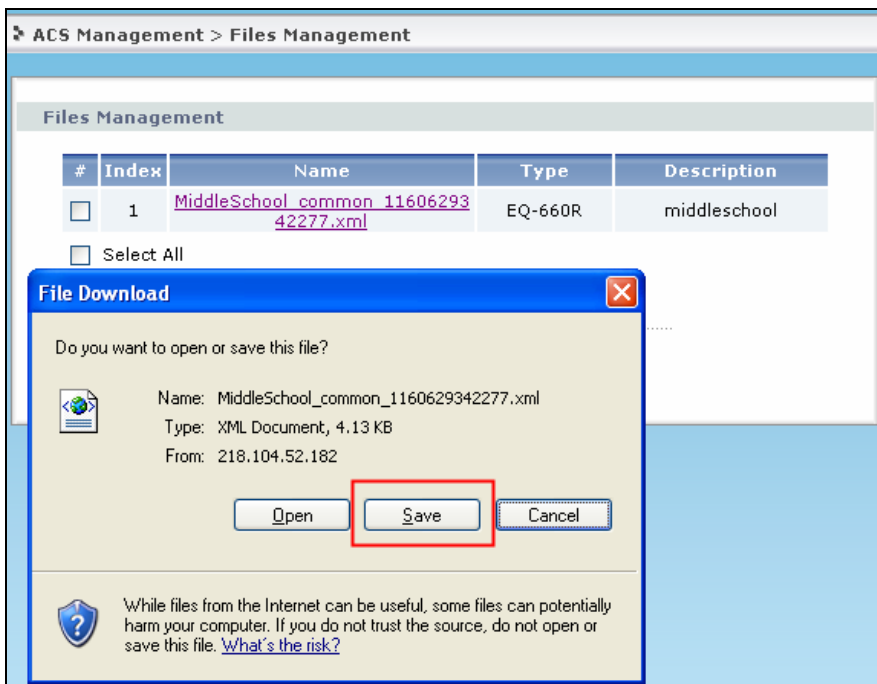
3. Specify the **File Name** and device object to edit the batch. Please go to **Export** the batch after finishing the job.



4. You can go to check batch file you have ever edited under menu **ACS Management>>Files Management**.



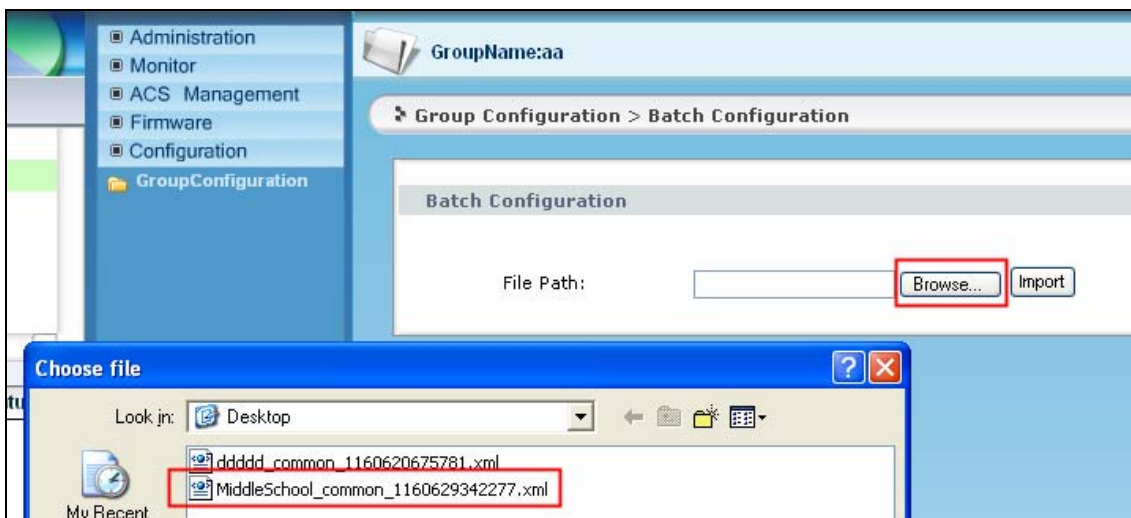
5. Please go to export the configuration file to your local host.



6. Go to choose a candidate group and then choose **Batch Configuration** by right clicking **GroupConfiguration** menu.



7. Go to import the above batch file from the local host to do batch configuration for devices that belong to the specific group.



Note: only manager user can do this job.

Firmware/Configuration Files Management

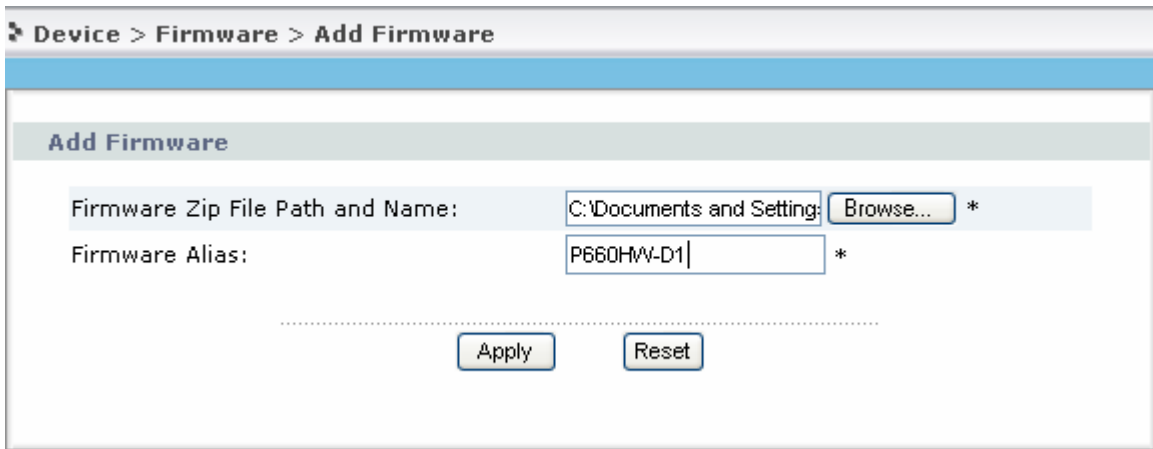
Upload Firmware to Vantage CNM Server

Vantage Access can help to upgrade firmware to CPE remotely. Before doing this, you need to download device's firmware from ZyXEL web site and then upload to Vantage Access server.

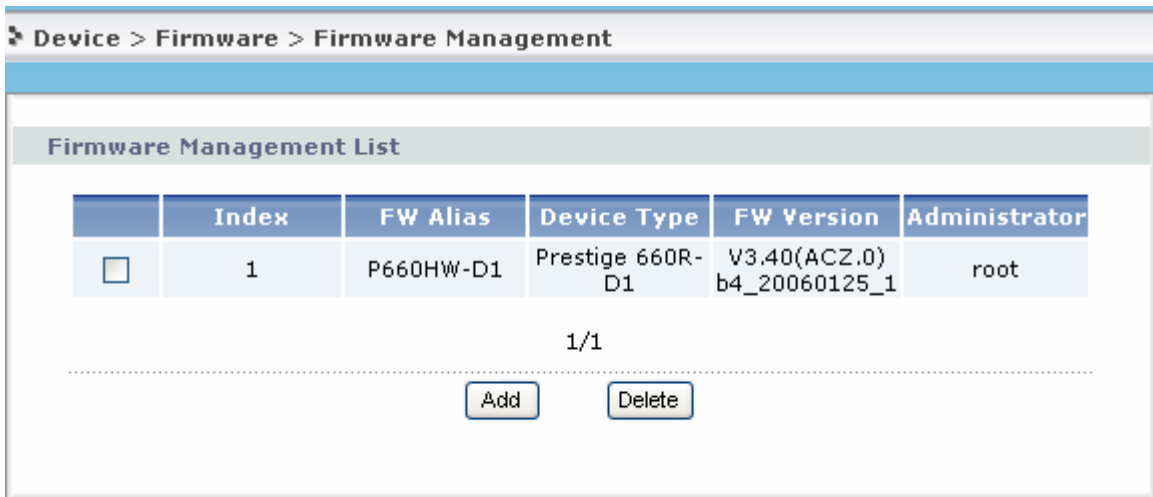
1. Save the firmware as .zip file to your local PC. Please make sure there is .xml file which denotes the info about firmware in the .zip file. Or Vantage Access will remind you about this. The .xml sample is like following,

```
<?xml version="1.0" encoding="UTF-8" ?>  
- <firmware xmlns:xsi="http://www.w3.org/2001/XMLSchema-instance">  
  <product>ADSL</product>  
  <model>Prestige 660HW-T1</model>  
  <version>V3.40(AGR.2)D0_20060810</version>  
  <date>08/10/2006</date>  
</firmware>
```

2. Please go to **Device>>Firmware>>Firmware Management**. After pressing **Add** button, firmware will be uploaded to Vantage Access Server.



3. Specify the device type of the uploaded firmware.

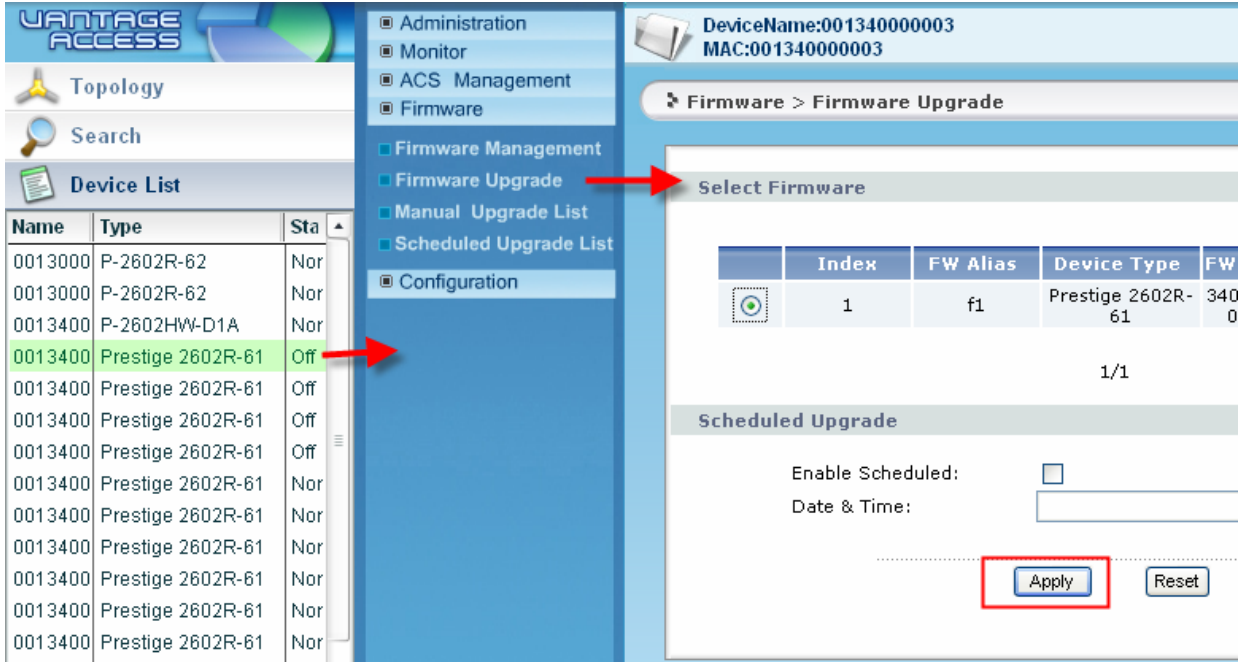


Firmware Upgrade for Device

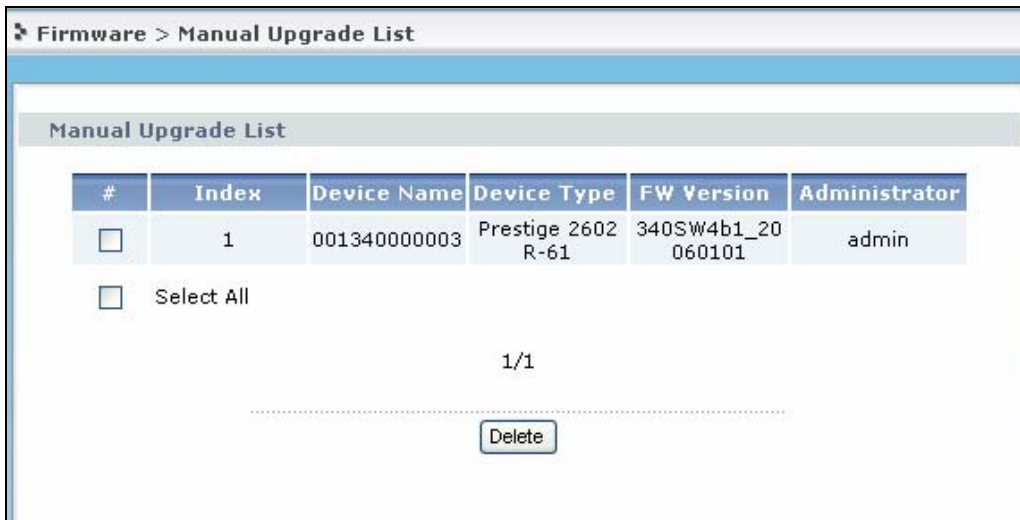
1. Please go to select a device from **Device List**. Also you can select a group from **Device Pool**

as the target object.

2. Go to menu **Firmware>>Firmware Upgrade** to select a useful firmware and **Apply**.



3. There should be a record in the **Manual Upgrade List**.



4. Vantage Server will upgrade the firmware to device/devices when CPE accepts the request. When firmware is upgrading, the device status will be changed to Upgrading.

Device List

| Index | Device Name | MAC | Device Type | Software Version | Status | Owner |
|-------|--------------|--------------|--------------|-------------------|-----------|-------|
| 1 | 001349020203 | 001349020203 | P-2602HW-D1A | V3.40(ADQ.1)_0804 | Upgrading | wg |

1/1

Scheduled Firmware Upgrade

1. Please go to select a device from **Device List**. Also you can select a group from **Device Pool** as the target object.
2. Go to menu **Firmware>>Firmware Upgrade** to select a useful firmware and customize the upgrade schedule and then **Apply**.

DeviceName:00134000003
MAC:00134000003

Firmware > Firmware Upgrade

Select Firmware

| Index | FW Alias | Device Type | FW Version | Administrator |
|-------|----------|-------------------|-------------------|---------------|
| 1 | f1 | Prestige 2602R-61 | 340SW4b1_20060101 | admin |

1/1

Scheduled Upgrade

Enable Scheduled:

Date & Time: 2006-10-10T16:30:00 * 0000-00-00T00:00:00

Apply Reset

3. Upgrade schedule will be listed in the Scheduled Upgrade List. Vantage Access server will upgrade firmware remotely at the scheduled time.

Firmware > Scheduled Upgrade List

Scheduled Upgrade List

| # | Index | Device Name | Device Type | FW Version | Scheduled Time | Administrator | Status |
|--------------------------|-------|--------------|--------------------|-------------------|---------------------|---------------|--------|
| <input type="checkbox"/> | 1 | 001340000003 | Prestige 2602 R-61 | 340SW4b1_20060101 | 2006-10-10T16:30:00 | admin | Enable |

Select All

1/1

.....

How to create user account?

1. Please go to menu **Administration>>Management** to **Add** an account.

| Management | | | | | | | |
|--------------------------|-------|---------|-------------------------|--------|------------|------------|-------------------|
| # | Index | Name | Login ID | Status | Entry | Level | Description |
| | 1 | root | root | login | | root | root |
| | 2 | admin | admin | logout | Easy Login | manager | manager |
| | 3 | guest | guest | logout | Easy Login | subscriber | subscriber |
| <input type="checkbox"/> | 4 | jack | jack | logout | Easy Login | manager | |
| <input type="checkbox"/> | 5 | kyle | kyle | logout | Easy Login | manager | kyle's test |
| <input type="checkbox"/> | 6 | jason | jason | logout | Easy Login | manager | |
| <input type="checkbox"/> | 7 | Cindy | Cindy | logout | Easy Login | manager | |
| <input type="checkbox"/> | 8 | Caltec | Caltec | logout | Easy Login | manager | |
| <input type="checkbox"/> | 9 | ruth | ruth | logout | Easy Login | manager | |
| <input type="checkbox"/> | 10 | bruce | bruce | logout | Easy Login | manager | |
| <input type="checkbox"/> | 11 | john | john | logout | Easy Login | manager | |
| <input type="checkbox"/> | 12 | maya | maya | logout | Easy Login | manager | |
| <input type="checkbox"/> | 13 | wxsw1-2 | wxsw1-2 | login | Easy Login | manager | for wxsw1 testing |
| <input type="checkbox"/> | 14 | wxsw1 | wxsw1 | logout | Easy Login | manager | aa |
| <input type="checkbox"/> | 15 | cso | cso | login | Easy Login | manager | |
| <input type="checkbox"/> | 16 | wg | wg | logout | Easy Login | manager | |

1/1

2. Please enter useful information for compulsory items and **Apply** to finish the account creation. When you login as root you can create account as manager and subscriber.

Note: There are three user accounts by default .They are root, admin and guest. When you login in as root user, you can create user account as manager or subscriber. When you login in as admin user, you only can create account as subscriber. When you login in as manager user, you only can create user account as subscriber.

Add User

State: Enable Disable

Level: ▼

Name: *

Login ID: *

Password: *

Password Confirm: *

E-mail Address: *

Contact Address:

Address Line 1

Address Line 2

City

State

ZIP/Postal Code

Country

Telephone Number:

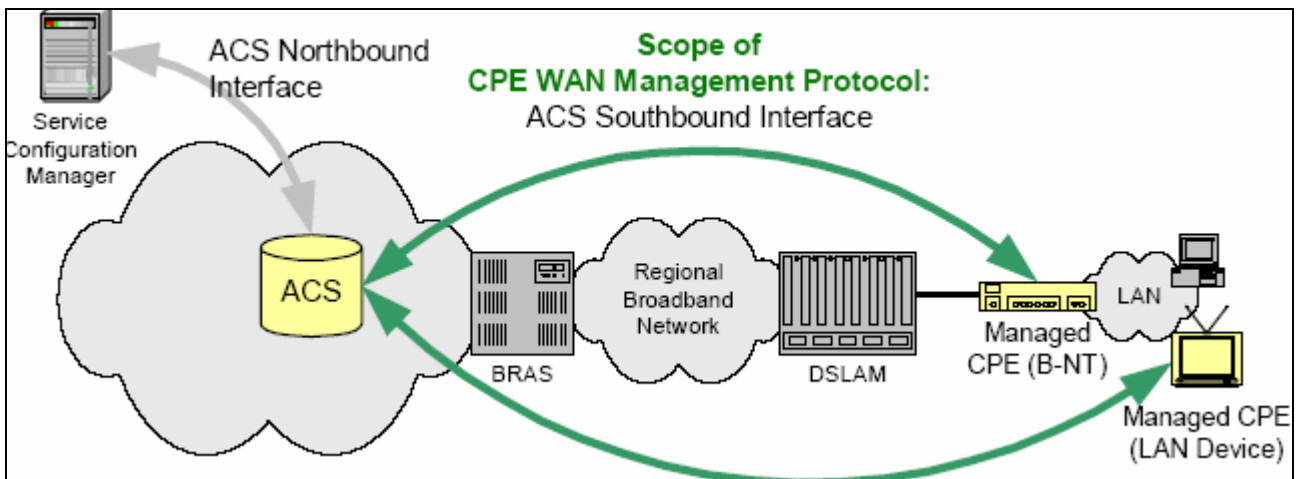
Note:

Advanced Application Notes

Application for MSSP

Suppose there's an application scenario for ISP. There are 1500 CPE devices needed to be managed. These devices are distributed over homes, small enterprises and schools. How can the ISP establish the environment to manage the devices? You can follow the steps below to do it.

1. Establish your network and install Vantage Access Server at your ISP site.



2. Edit the .xml file for batch import. Please go to [Enable/Setup Vantage Function on ZyXEL Devices](#) for detailed information.

3. Create different users account for Home users, small enterprise users and schools users. ISP administrator's user account has the highest privilege. Please go to [How to create user account?](#) for detailed explanation.

4. Associate devices to different users. Please go to [How to associate a device with a user?](#) for detailed information. And also you can separate the devices into different groups for management purpose. Please go to [How to add a device to a specific group?](#) for detailed information. It is very convenient to do group configuration.

5. Configuration of devices. Suppose there are three groups under school account. They are Primary school, Middle school and university. You can create group configuration for every group and then do group device configuration. Please go to [How to do device group configuration?](#) for detailed information.

Also as daily job you can check the configuration and status under menu **Configuration** for each device once you want to.

6. Do firmware upgrade management for each device either manually or scheduled. You should [Upload Firmware to Vantage CNM Server](#) first and then do [Firmware Upgrade for Device](#) or do [Scheduled Firmware Upgrade](#).

Trouble Shooting

Why Vantage Access server starts so slowly?

If there's no any DNS server in the network, problem will occur. Please go to edit /etc/hosts file to clarify the IP address with the hostname on which the Vantage Access server was installed.

The similar sample is shown as following.

```
# Do not remove the following line, or various programs
# that require network functionality will fail.
127.0.0.1 localhost.localdomain localhost
# add something by christine, support ACS ip 172.25.22.74 and hostname is Tr069_
bed
172.25.22.74 Tr069_bed_
```



FAQ

Product FAQ

Q1: What is Vantage Access?

TR-069 is a standard-based communication protocol that defined by DSL forum intended to allow service provider to manage the CPE remotely. It helps the service provider provide the service parameter, do firmware upgrade, monitor status and also diagnostic the line status without physically access the CPE.

Vantage Access is based on this concept to do the implementation. Designed to use the standard-based TR-069 communication protocol to come out the Centralized Network Management tool, intended for carrier grade service provider to auto-configuring, monitor and diagnostic CPE that located remotely, provides operator a simple method of controlling the

associated hardware and activities. Vantage Access is using the state of art software technology currently available to achieve platform independent, distributed, scalable, load balance and fault tolerant.

Q2: How many devices can Vantage Access server support?

Vantage Access server can support 100k devices currently.

Q3: How many user types does Vantage Access support?

Vantage Access supports three types of users. They are root, manager and subscriber.

Each user has different privilege.

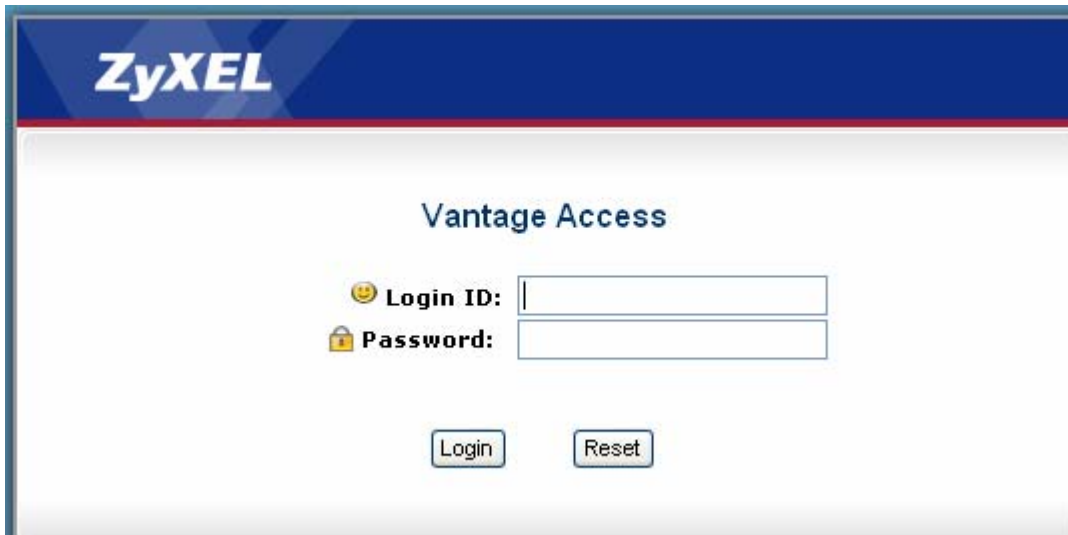
| | | root | manager | subscriber |
|----------------|----------------------|------|---------|------------|
| Topology | | ✓ | ✓ | ✓ |
| Search | | ✓ | ✓ | ✓ |
| Device List | | ✓ | ✓ | ✓ |
| Administration | Management | ✓ | ✓ | ✓ |
| Monitor | Log | ✓ | ACS Log | ✓ |
| | | | CPE Log | |
| | Configuration Status | | | |
| | Notification | | | |

| | | | | | |
|----------------|------------------------|------------|---|---|---|
| | CPE Status | | | | |
| ACS Management | Import Devices | | ✓ | ✓ | ✗ |
| | Files Management | | | | |
| | Maintenance | Management | ✓ | ✗ | ✗ |
| | | Restore | | | |
| | | Backup | | | |
| | HTTP Server | | ✓ | ✗ | ✗ |
| | Log Options | | | | |
| Log Setting | | | | | |
| Firmware | Firmware Management | | ✗ | ✓ | ✗ |
| | Firmware Upgrade | | | | |
| | Manual Upgrade List | | | | |
| | Scheduler Upgrade List | | | | |
| Configuration | | | ✗ | ✓ | ✗ |

Q4: How to login Vantage Access server?

Please open IE browser and enter the IP address of Vantage Access server in the URL.

And then enter user/password to login the server.



ZyXEL

Vantage Access

😊 **Login ID:**

🔒 **Password:**