

# ZyXEL VLC1124A V3.50(LQ.2)

## Release Note/Manual Supplement

---

**Date:** Jan. 26, 2005

This document describes the features in the VLC1124A product for its 3.50(LQ.2) release.

### ***Support Platforms:***

---

ZyXEL VLC1124A V3.50(LQ.2) supports models: ZyXEL VLC1124A

### ***Version:***

---

ZyNOS Version: V3.50(LQ.2) | 12/07/2004 17:22:29

BootBase Version: V1.04(VLC1124A) | 01/26/2005 16:32:12

### ***Known Issue:***

---

1. Ethernet AC101 PHY are not compatible with specific PHY.
2. Cannot generate pause frame when multiple vdsl ports send packets to uplink port.
3. Bandwidth control works only when Flow control enabled.
4. When GVRP enable, leave timer and leave all timer should be increased when lots of dynamic VLAN join.
5. Per port PVID setting is limited in set range(1-255, 256-511,..., 3840-4094). If port 1 is set PVID in one of the set range, the other ports PVID also should be set to the same set range.
6. Some MIB browser will keep original community setting. MIB browser should be restart when changing community setting.
7. Default rate adaptive setting change from fixed mode to rate adaptive decrease mode.
8. Keep pressing port test button before accomplish port test will cause system reboot.
9. Before VDSL link up, VDSL LED will light on/off many times. In this state, vdsl is waiting for connecting to target rate.

### ***Bug Fix V3.50(LQ.2):***

---

1. Standard Release for VLC1124A

### ***Bug Fix V3.50(LQ.2)b3:***

---

1. Warm Start / Cold Start Trap cannot be sent out in DHCP mode.

### ***Bug Fix V3.50(LQ.2)b2:***

---

1. System name shows "VES-1124" after loading default setting.
2. User cannot access DUT after executing Port Test in port isolation setting of port\_based VLAN mode.
3. Some VID field shows zero in MAC table in port\_based VLAN mode.
4. Default Gateway setting cannot work.
5. It should rename to "Priority" from "802.1P Priority" in port setup page. Due to switch chip did not tag 802.1P priority value to packets.

### ***Bug Fix V3.50(LQ.2)b1:***

1. Process Port Test before VDSL link up will cause system crash.
2. Gray out the edit box of Management VID in port based VLAN mode.
3. Gray out the edit box of VID in Static MAC Forwarding page for port based VLAN mode.
1. Remove one garbage string in port based VLAN table that is in last row and last column.
2. Fix bug that pause timer may overflow problem.
3. Add workaround when READY BIT no response.
4. Fix bug that remote PHY invalid setting may cause traffic hang lock.
5. Packet from CPU will flood to other ports in port based vlan.
6. VDSL CPE Ethernet link down will not flush arp table.

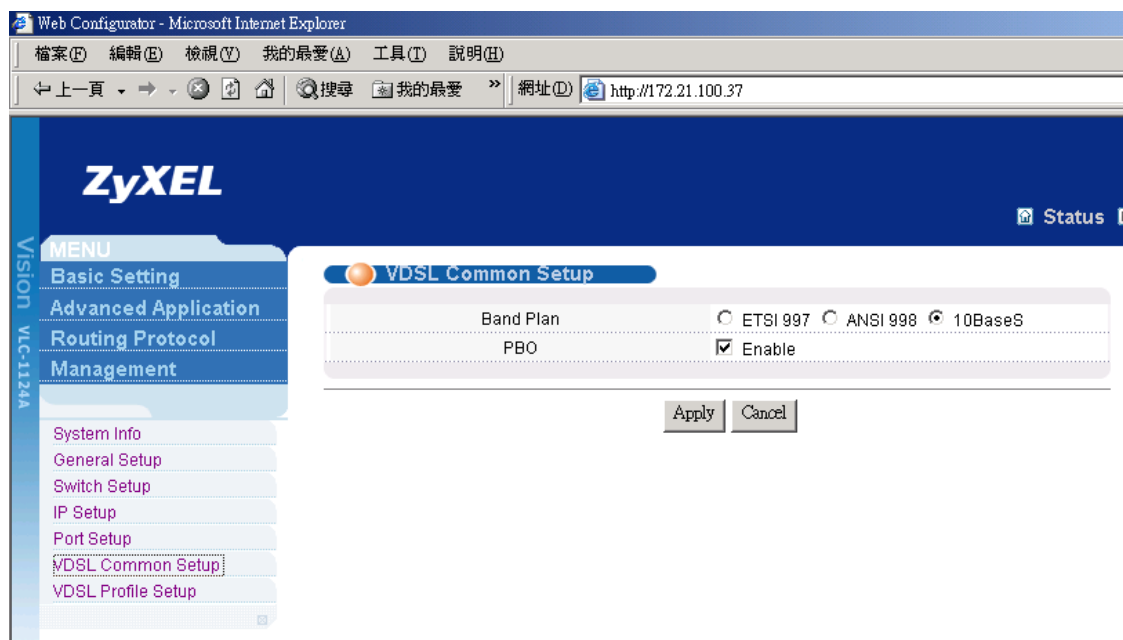
### ***Bug Fix V3.50(LQ.1):***

1. HELP page link lost.
2. MIB counter display error.

### ***Features:***

#### **1. VDSL Common Setup**

Providing mechanisms for setting VDSL system-wide parameters, including band plans of ETSI 997, ANSI 998, 10BaseS, and Power Back Off (PBO) enable/disable.



#### **2. VDSL Profile Management:**

The profile management is used for creating/modifying/deleting VDSL profiles used by each ports for different VDSL parameters. Currently we provide maximum 24 profiles for all system. One of the profiles named "DEFVAL" is the default profile of the system and can not be deleted. Any changes of the profiles will cause the VDSL port retrain.

Web Configurator - Microsoft Internet Explorer

檔案(F) 編輯(E) 檢視(V) 我的最愛(A) 工具(T) 說明(H)

← 上一頁 → 網址(D) http://172.21.100.37

**ZyXEL** Status

**MENU**

- Basic Setting
- Advanced Application
- Routing Protocol
- Management
- System Info
- General Setup
- Switch Setup
- IP Setup
- Port Setup
- VDSL Common Setup
- VDSL Profile Setup

**VDSL Profile Setup**

Name: DEFVAL

Downstream Payload Rate: 12.50Mbps

Upstream Payload Rate: 12.50Mbps

Rate Adaptive: ☒ Fixed Mode ☐ Rate Adaptive Decrease Mode

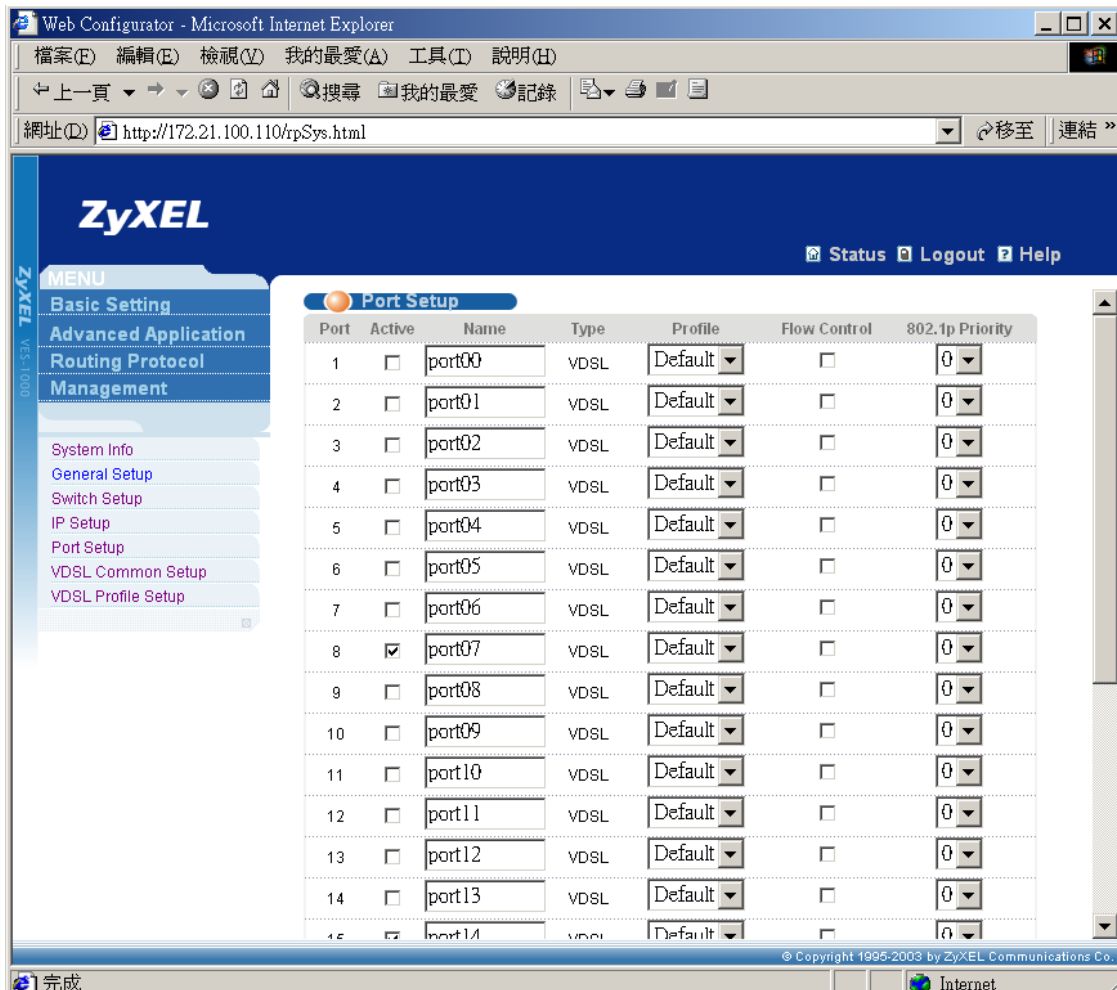
Add Cancel Clear

Name	Line Rate	Applied Ports	Delete
DEFVAL	12M/12M	1-24	<input type="checkbox"/>

Delete Cancel

### 3. VDSL Port Profile Assignment

In the Port Setup page, the user can assign which profile to be used for each port.



## Firmware Upgrade:

The VLC1124A uses FTP to upgrade firmware in run-time through its built-in FTP server. You can use any FTP client (for example, [ftp.exe](#) in Windows) to upgrade VLC1124A. The upgrade procedure is as follows:

### Upgrade VLC1124A FW:

```
C:\> ftp <VLC1124A IP address>
User : <Enter>
Password: 1234
230 Logged in
ftp> put 350LQ2C0.bin ras
ftp> bye
```

Where

- User name : just press <Enter>
- Password : the management password, 1234 by default
- 350LQ2C0.bin : the name of firmware file you want to upgrade

- ras : the internal firmware name in VLC1124A

### ***Configuration Upgrade:***

---

The VLC1124A uses FTP to upgrade configuration in run-time through its built-in FTP server. You can use any FTP client (for example, [ftp.exe](#) in Windows) to upgrade VLC1124A . The upgrade procedure is as follows:

#### **Upgrade VLC1124A configuration:**

```
C:\> ftp <VLC1124A IP address>
User : <Enter>
Password: 1234
230 Logged in
ftp> put 350LQ2C0.rom rom-0
ftp> bye
```

Where

- User name : just press <Enter>
- Password : the management password, 1234 by default
- 350LQ2C0.rom : the name of configuration file you want to upgrade
- rom-0 : the internal configuration name in VLC1124A

### ***Commands Table:***

---

- Partial VDSL Profile and VDSL Port commands are not fully supported

sys

snmp	GetCom	[<community>		Set or view community of
	munity	]		GetRequest.
	setComm	[<community>		Set or view community of
	unity	]		SetRequest.
	trustedHo	[<hsot>]		Set or view trusted host.
	st			
	trapCom	[<community>		Set or view community of Trap
	munity	]		
	trapDest	[<destination>		Set or view trap server.
	]			
cluster	disp			View snmp setting.
	active	<name>		Active cluster
	inactive	<name>		Inactive cluster
	add	<MAC addr>	<password	Add a member into cluster
			>	
	remove	<MAC addr>		Remove a member from cluster.
	showMe			Show member list
	meber			
	showCan			Show candidate list
	didate			
	status			Show cluster status

config save

Save configuration

Switch commands: The following commands are under “**sys switch**”

garp	status									show garp timer status
	timer	<join	<leave	<leave all						set garp timer <join timer>
		timer(ms)	timer(ms)>	timer<ms>						<leave timer> <leave all
		>								timer>
gvrp	status									show gvrp status
	enable									enable gvrp function
	disable									disable gvrp function
qos	defpri	<port>	[<0..7>]							set the default ingress User
										Priority for this port
	map	<0..7>	[<queue>]							<port>.
										User Priority to Traffic
										Class mapping.
vlan1	port	status	<port>							show port <port> VLAN
q										information.
		defaultVI	<port>	<VID>						set defaultVID<VID> of
		D								this port<port>.
		accept	<port>	<all tagged						set acceptFrameType of
				>						this port.
		gvrp	<port>	<enable dis						Enable/disable the gvrp
				able>						function of this port
										<port>.
	svlan	cpu	<VLAN ID>							Set VLAN ID of cpu.
		setentry	<name>	<VID>	<port>	<adctl>	<<tagctl>			set static
										entry.<VID>
		delentry	<VID>							delete static entry<VID>
		active	<VID>							active the static entry with
										<VID>
		inactive	<VID>							inactive the static entry
										with <VID>
		list								show the static entry table.
	vlan	list	<all vid start_vid							Show vlan1q current table.
			end_vid>							
driver	count	disp								Show the switch NDIS
										level counters(CPU
										interface)
		clear								Clear the switch NDIS
										level counters(CPU
										interface)
rstp	bridge									<a href="#">Please reference to 802.1w</a>
		enable								Enable RSTP
		disable								Disable RSTP
		priority	<priority>							System Priority
		maxAge	<max age>							Max age timer
		helloTim	<hello time>							Hello timer
		e								

	forwardD	<forward delay		Forward delay time
	elat	time>		
	version	<STP:0 RSTP:2		Operation Mode
		>		
port	enable	<Port_NO>		Enable this port under RSTP protocol
	disable	<Port_NO>		Disable this port under RSTP protocol
	pathCost	<Port_NO>		Cost of this path
	priority	<Port_NO>		Priority
	edgePort	<Port_NO>		If this port is an edge port
	p2pLink	<Port_NO>		Whether the Port concerned can only be connected to exactly one other Bridge or can be connected to two or more Bridges
	mcheck	<Port_NO>		802.1w chapter 17.18.10
lacp				<a href="#">Please reference to 802.3ad</a>
	agg			Display aggregation information
port	enable	<Port_NO>		
	disable	<Port_NO>		
	status	<Port_NO>		
	actorAd			Actor means local side
	m			
	activity	[Port_NO [0:passive 1:active]		
		]		
	display	[Port_NO		
		]		
	key	[Port_NO [Key]		
		]		
	priority	[Port_NO [Priority]		
		]		
	timeout	[Port_NO [0:long_timeout 1:s		
		] hort_timeout]		
	status			
	keymgnt	[on off]		
	sysPriorit	<priority>		
	y			
dot1x				<a href="#">Please reference to 802.1x</a>
	enable			Enable dot1x
	disable			Disable dot1x
	status			Show dot1x global status
port	enable	<Port_NO>		Enable this port
	disable	<Port_NO>		Disable this port
	reauth	<Port_NO>	<on off>	Re-authentication
	reauthPer	<Port_NO>	<value>	Re-authentication period
	iod			

	status	<Port_NO>			Port status
set	auth	<profile   radius>			Set authentication method
	portcontrol	<port-no>	<auto  auth   unauth>		Set port authentication status
radius	server	<IP>			Server IP
	secret	<secret>			Secret key
	port	<port>			Server port
	show				Display server setting (Won't be saved in flash)
profile	add	<username>	<passwd>		Add a user profile
	delete	<idx>			Delete a user profile
	list				List profile setting
class	display				Class setting
	l2set	<src port>	<src MAC> <src vid>	<dest port> <dest MAC> <dest vid>	display run-time status Set src/dest port/MAC combination
	del	<class id>			Delete this class
bmstorm	disable				Broadcast Storm Control
	type	<type>			Clear current run-time settings
	basis	<type>			Broadcast/Multicast/Both
	display	[index]			Pkt/Byte
	interval	[value]			Display ports setting
	set	<port>	<dhreshold>	<direction>	Set/display monitor interval Threshold:# of pkt can be passed in the interval Direction:ingress/egress
	del	<index>			Disable on this port
mac	static				Static MAC setting
	disable				Clear current run-time settings
	display	[port]			display run-time status
	set	<port>	<MAC Addr.>	<vid>	Set static MAC of the port
	del	<port>	<MAC Addr.>	<vid>	Delete static MAC of the port
filter	disable				MAC filter setting
	display				Clear current run-time settings
	set	<src port>	<src MAC> <src vid>	<dest port> <dest MAC> <dest vid>	display run-time status Set src/dest port/MAC combination ( Use "*" as "don't-care"



					in each field)					
mirror	disable				Mirror setting					
	display				Clear current run-time settings					
	set	<src port>	<src MAC> <src vid>	<dest port> <dest MAC> <dest vid>	display run-time status Set src/dest port/MAC combination for mirror settings ( Use "*" as "don't-care" in each field)					
		<input output both>								
	port	<port>	What port mirror to							
bw	disable				Bandwidth Control setting					
	display				Clear current run-time settings					
	set	<src port>	<src MAC> <src vid>	<dest port> <dest MAC> <dest vid> <Max BW>	display run-time status Set src/dest port/MAC combination ( Use "*" as "don't-care" in each field)					
trunk	disable				Trunking setting					
	display				Clear current run-time settings					
	set	<group>	<# ports>							
del	<group>									
display run-time status										
Set trunking group										
del trunking group										
monit or	Set				Set voltage, temperature					
	Status				Show Monitor status					
Ip	dhcp	<Iface>	mode	<none   client>	Change DHCP mode for interface <Iface>					
			status		Show DHCP status					
			client	release	Release the IP address					
				renew	Renew the IP address.					

● Following commands are not fully supported

Profile commands: The following commands are under "vdsl profile "

list					List profile
create	<profile name>				Create a new profile with default setting
delete	<profile name>				Delete a profile
apply	<profile name>	<port number			Apply current profile setting to

		all>			other port
display	<profile name>				Display setting of current profile
set	<profile name>	name	<profile name>		Set the profile name of current profile
		uspayloadrate	max		Set the max upstream payloadrate
			min		Set the min upstream payloadrate
		dspayloadrate	max		Set the max downstream payloadrate
			min		Set the min downstream payloadrate
		rate-adaption	fix		Set rate-adaption mode to fixed mode
			adaption		Set rate-adaption mode to adaption mode
		snr	max		Set value of max snr
			min		Set value of min snr
			upstream	target	Set value of upstream target snr
			downstream	target	Set value of downstream target snr
		compatible-mode	adsl		Set to adsl compatible-mode
			pots		Set to pots compatible-mode
		usinterdelay			Set value of upstream interleave delay
		dsinterdelay			Set value of downstream interleave delay
		rft	disable		Set rft to disable
			standard	annex_f	Set rft to annex f standard
				etsi	Set rft to etsi standard
				t1e1	Set rft to t1e1 standard
vdsl	port	<port number   all>	enable		Set the port to line enable
			disable		Set the port to line disable
			retrain		Re-train operation for the port
			Re-provision		Re-provision for the port
			reset		Reset for the port
			remote-reset		Remote-reset CPE for the port
		<port number>	remote-test		Send EOC loopback packet for the remote test
			config	Display	Display config setting
			status	Display	Display current status for the port
			counter	Clear	Clear counter for the port
vdsl	bandplan				Set bandplan for vdsl system configuration
	Pbo	enable			Set PBO to enable
		disable			Set PBO to disable

***MIB support:***

---

The following is the private vdsl related MIB currently supported by VLC1124A:

- accessSwitchVdslLineTable
- accessSwitchVdslVtuoPhysTable
- accessSwitchVdslVturPhysTable
- accessSwitchVdslVtuoInventoryTable
- accessSwitchVdslVturInventoryTable
- accessSwitchVdslVtuoIntervalTable
- accessSwitchVdslVturIntervalTable
- accessSwitchVdslLineConfProfileTable
- accessSwitchVturDevTable
- accessSwitchVturConfTable
- accessSwitchVturStateTable
- accessSwitchVdslVtuoPhyMCMTTable
- accessSwitchVdslVturPhyMCMTTable

***Test Items:***

---

1. VDSL profile create/modify/delete, and assign the profile to the specific VDSL port.
2. VDSL port retrain.
3. Load factory default.
4. IP Setting