

# ZyXEL



## Cost-effective Broadband Access Solution for Residential



ZyXEL's P-660R Compact Series is the next generation of compact routers capable of speeds up to 12Mbps (ADSL2) and 24 Mbps (ADSL2+). Enabling high-speed Internet connections, the P-660R Compact Series is designed for small office, home office, and residential users. Enjoy ADSL services and broadband multimedia applications such as interactive gaming, video streaming, and real-time audio easier and faster than ever before.

### Benefits

#### Higher-speed Internet Access

ZyXEL's P-660R Compact Series router complies with ADSL worldwide standards. With speeds of up to 12Mbps (ADSL2) or 24Mbps (ADSL2+), the P-660R Series offers higher data transfer rates and better bandwidth than traditional ADSL enabled gateways. Users can enjoy not only high-speed ADSL services, but also broadband multimedia applications such as interactive gaming, video streaming, and real-time audio much easier than before.

#### UPnP Support

The P-660R Compact Series supports UPnP discovery and UPnP NAT traversal. Using the standard TCP/IP protocol, the P-660R Compact Series can join a network, obtain an IP address, convey its capabilities, and learn about other devices on the network.

#### Zero Configuration Support

Thanks to ZyXEL's exclusive Zero Configuration technology, quick and easy installation allow users to hook up a DSL connection in minutes.

#### Compact Size

The P-660R Compact Series benefits from its smaller size. It's compact, flexible, easy to install. It's cooler in both operations and appearance.



ADSL2+ Router

P-660R  
COMPACT SERIES

# ROUTER



## Specifications

### ADSL Compliance

- RADSL (ANSI T1.413 Issue 2)
- G.dmt ADSL over POTS (G.992.1 Annex A)
- G.dmt ADSL over ISDN (G.992.1 Annex B and U-R2)
- G.lite (G.992.2)
- G.hs (G.994.1)
- Auto-negotiating rate adaptation
- ADSL2 G.dmt.bis(G.992.3)
- ADSL2 G.lite.bis(G.992.4)
- ADSL2+ (G.992.5)
- Reach Extended ADSL(RE ADSL)

### ATM supports

- 8 PVCs Support
- RFC 1483/2684 Multiple Protocol over AAL5
- VC and LLC Multiplexing
- Traffic Shaping UBR,CBR,VBR-nrt
- ATM Forum UNI 3.1/4.0 PVC
- I.610 OAM F4/F5 loop-back, AIS, and RDI OAM cells

### PPP Support

- PPP (RFC 1661)
- PPP over AAL5 (RFC 2364)
- PPP over Ethernet (RFC 2516)
- PAP Authentication (RFC 1334)
- CHAP Authentication (RFC 1994)

## Product Description

**P-660R-T1** ADSL2+ Router over POTS

**P-660R-T3** ADSL2+ Router over ISDN

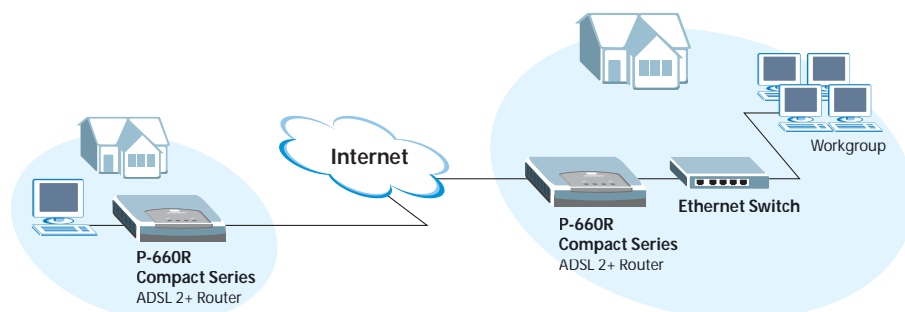
**P-660R-T7** ADSL2+ Router over U-R2

**P-660R-T1 v2** ADSL2+ Router over POTS

**P-660R-T3 v2** ADSL2+ Router over ISDN

**P-660R-T7 v2** ADSL2+ Router over U-R2

## Application Diagram



### Routing/Bridge Support

- IEEE 802.1d Transparent Bridging
- 802.1q Pass-through Bridge
- Up to 256 MAC Learning Address
- IP Routing: TCP, UDP, ICMP, ARP
- RIPv1 and RIPv2
- Static Route
- IP Multicast IGMP v1/v2
- IP Policy Route

### IP Management

- SUA (Single User Account)
- Multi-NAT (Network Address Translation)
- Multimedia Support
- VoIP SIP Pass-through
- VPN (IPSec,PPTP,L2TP Pass-through)
- DHCP Server/Relay/Client
- IP Alias
- DNS Proxy
- Dynamic DNS
- UPnP Support

### Network Management

- Web-based Configuration
- Command-line Interpreter(CLI)
- Telnet Remote Management
- SNMP MIB Support
- FTP/TFTP firmware upgrade and configuration backup/restore
- Built-in Diagnostic Tool

### Security

- Password-protected System Management Terminal
- PAP(Password Authentication Protocol)
- CHAP(Challenge Handshake Authentication Protocol)
- Microsoft CHAP
- IP Packet Filtering for Access Control

### Advanced

- Traffic Redirect
- Zero Configuration
- Call Scheduling
- Budget Management
- Multimedia Auto Provisioner

### Hardware specification

- ADSL:One RJ-11 or RJ-45
- LAN:One Port Switch,10/100M Auto MDI/MDIX
- Reset Button
- Status LEDs Indicator
- Power 9V

### Physical Specifications

- Dimensions: 105(W) x 106.5(D) x 35(H) mm
- Weight: 170g

### Environmental Specifications

- Temperature: 0 C ~ 40 C
- Humidity: 20% ~ 85%

**P-660R-61C** ADSL2+ Router over POTS

**P-660R-63C** ADSL2+ Router over ISDN

**P-660R-67C** ADSL2+ Router over U-R2

**P-660R-D1** ADSL2+ Router over POTS

**P-660R-D3** ADSL2+ Router over ISDN

**P-660R-D7** ADSL2+ Router over U-R2

For more product information, visit us on the web [www.ZyXEL.com](http://www.ZyXEL.com)

Corporate Headquarters  
ZyXEL Communications Corp.  
Tel: +886-3-578-3942  
Fax: +886-3-578-2439  
Email: [sales@zyxel.com.tw](mailto:sales@zyxel.com.tw)  
<http://www.zyxel.com>

ZyXEL Denmark A/S  
Tel: +45 39 55 07 00  
Fax: +45 39 55 07 07  
Email: [sales@zyxel.dk](mailto:sales@zyxel.dk)  
<http://www.zyxel.dk>

ZyXEL France SARL  
Tel: +33 (0)4 72 52 97 97  
Fax: +33 (0)4 72 52 19 20  
Email: [info@zyxel.fr](mailto:info@zyxel.fr)  
<http://www.zyxel.fr>

ZyXEL Hungary  
Tel: +36-1-336-1646  
Fax: +36-1-325-9100  
Email: [info@zyxel.hu](mailto:info@zyxel.hu)  
<http://www.zyxel.hu>

ZyXEL North America  
Tel: +1-714-632-0882  
Fax: +1-714-632-0858  
Email: [sales@zyxel.com](mailto:sales@zyxel.com)  
<http://www.us.zyxel.com>

ZyXEL Russia  
Tel: +7 (095) 542-8920  
Fax: +7 (095) 542-8925  
Email: [info@zyxel.ru](mailto:info@zyxel.ru)  
<http://www.zyxel.ru>

ZyXEL Sweden A/S  
Tel: +46 (0) 31 744 77 00  
Fax: +46 (0) 31 744 77 01  
Email: [sales@zyxel.se](mailto:sales@zyxel.se)  
<http://www.zyxel.se>

ZyXEL Ukraine  
Tel: +380 44 494 49 31  
Fax: +380 44 494 49 32  
Email: [sales@ua.zyxel.com](mailto:sales@ua.zyxel.com)  
<http://www.ua.zyxel.com>

ZyXEL Czech s.r.o.  
Tel: +420 241 091 350  
Fax: +420 241 091 359  
Email: [info@cz.zyxel.com](mailto:info@cz.zyxel.com)  
<http://cz.zyxel.com>

ZyXEL Finland Oy  
Tel: +358-9-4780 8400  
Fax: +358-9-4780 8448  
Email: [sales@zyxel.fi](mailto:sales@zyxel.fi)  
<http://www.zyxel.fi>

ZyXEL Germany GmbH.  
Tel: +49 (0) 2405-6909 0  
Fax: +49 (0) 2405-6909 99  
Email: [sales@zyxel.de](mailto:sales@zyxel.de)  
<http://www.zyxel.de>

ZyXEL Kazakhstan  
Tel: +7-327-2-590-699  
Fax: +7-327-2-590-689  
Email: [sales@zyxel.kz](mailto:sales@zyxel.kz)  
<http://www.zyxel.kz>

ZyXEL Norway A/S  
Tel: +47 22 80 61 80  
Fax: +47 22 80 61 81  
Email: [sales@zyxel.no](mailto:sales@zyxel.no)  
<http://www.zyxel.no>

ZyXEL Spain  
Tel: +34 902 195 420  
Fax: +34 913 005 345  
Email: [sales@zyxel.es](mailto:sales@zyxel.es)  
<http://www.zyxel.es>

ZyXEL UK Ltd.  
Tel: +44 (0) 1344 303044  
Fax: +44 (0) 1344 303034  
Email: [sales@zyxel.co.uk](mailto:sales@zyxel.co.uk)  
<http://www.zyxel.co.uk>