

ZyXEL

TOTAL INTERNET ACCESS SOLUTION

Prestige 100MH

PSTN Router/Hub

Quick Start Guide

Prestige 100MH

PSTN Router/Hub

Copyright

Copyright © 1998 by ZyXEL Communications Corporation.

The contents of this publication may not be reproduced in any part or as a whole, transcribed, stored in a retrieval system, translated into any language, or transmitted in any form or by any means, electronic, mechanical, magnetic, optical, chemical, photocopying, manual, or otherwise, without the prior written permission of ZyXEL Communications Corporation.

Published by ZyXEL Communications Corporation. All rights reserved.

Disclaimer

ZyXEL does not assume any liability arising out of the application or use of any products, or software described herein. Neither does it convey any license under its patent rights nor the patents rights of others. ZyXEL further reserves the right to make changes in any products described herein without notice. This publication is subject to change without notice.

Trademarks

Trademarks mentioned in this publication are used for identification purposes only and may be properties of their respective owners.

Table of Contents

Chapter 1

Before You Begin

1.1	Purpose Of This Guide.....	1
1.2	Who Should Not Use This Guide:	1
1.3	Package Contents	1
1.4	Information From Your ISP	2
1.5	Prestige's Default TCP/IP Settings	3
1.5.1	<i>IP Address and Subnet Mask</i>	3
1.5.2	<i>DHCP Setting</i>	3

Chapter 2

Cabling & Installation

2.1	Prestige 100MH	5
-----	----------------------	---

Chapter 3

Windows 95 Quick Start

3.1	TCP/IP Installation	7
3.2	TCP/IP Configuration	9

Chapter 4

Windows NT Quick Start

4.1	TCP/IP Installation	15
4.2	TCP/IP Configuration	16

Chapter 5

Prestige Web Configurator Setup

5.1	Installing PWC Components.....	21
5.2	Starting the Prestige Web Configurator	23

Customer Support	25
-------------------------------	-----------

Chapter 1

Before You Begin

1.1 Purpose Of This Guide

This guide provides instructions on how to setup your new *Prestige* and Windows 95/NT workstations for Internet access using the *Prestige* Web Configurator (PWC).

The *Prestige* Web Configurator provides a quick, simple, and intuitive way to configure your *Prestige*. Using a “point-and-click” Web-based Graphical User Interface (GUI), you can configure, save, monitor, and diagnose your *Prestige* from any workstation on your LAN.

1.2 Who Should Not Use This Guide:

If the intended application for your *Prestige* is other than Internet access for Window 95 or NT workstations, then this guide is not for you. Please refer to the *Prestige* User’s Guide for details on other applications.

1.3 Package Contents

This first thing you should do is check all items you received with your *Prestige* against this list to make sure nothing is missing. The complete package should include:

- Ø One *Prestige* 100MH Router/Hub
- Ø One Power Adapter: 16V AC Output

- θ One Telephone Cable with RJ-11 Connectors
- θ One DB-25(male)/DB-9(female) Converter
- θ One Console RJ-45/DB-25(female) Cable
- θ One Ethernet 10Base-T cable
- θ One *Prestige* Web Configurator CD ROM
- θ One *Prestige* Series User's Manual
- θ One Warranty Registration Card
- θ One *Prestige* Web Configurator User's Guide
- θ This *Prestige* Quick Start Guide

1.4 Information From Your ISP

Your Internet Service Provider (ISP) should provide information needed to setup your *Prestige*, usually in the form of an account configuration sheet. The information includes:

- . User name and password
- . ISP's access phone number.
- . IP address of ISP's DNS (Domain Name System) server(s).
- . Will the ISP be providing you with a static IP address?
 - . If yes, what is the range of IP address and subnet mask dedicated to your account?
- Does the ISP support Multi-Link PPP (MP)?

If your Internet access is not through a commercial ISP, e.g., your corporate dial-in server, please consult with your network administrator for the above information.

1.5 Prestige's Default TCP/IP Settings

1.5.1 IP Address and Subnet Mask

Your *Prestige* is pre-configured in the factory with IP Address of 192.168.1.1 and subnet mask of 255.255.255.0 (Class C).

1.5.2 DHCP Setting

Your *Prestige* has a built-in DHCP (Dynamic Host Configuration Protocol) server. DHCP allows the individual workstations on a network to obtain their TCP/IP configuration at start-up from a centralized DHCP server (in this case, the *Prestige*).

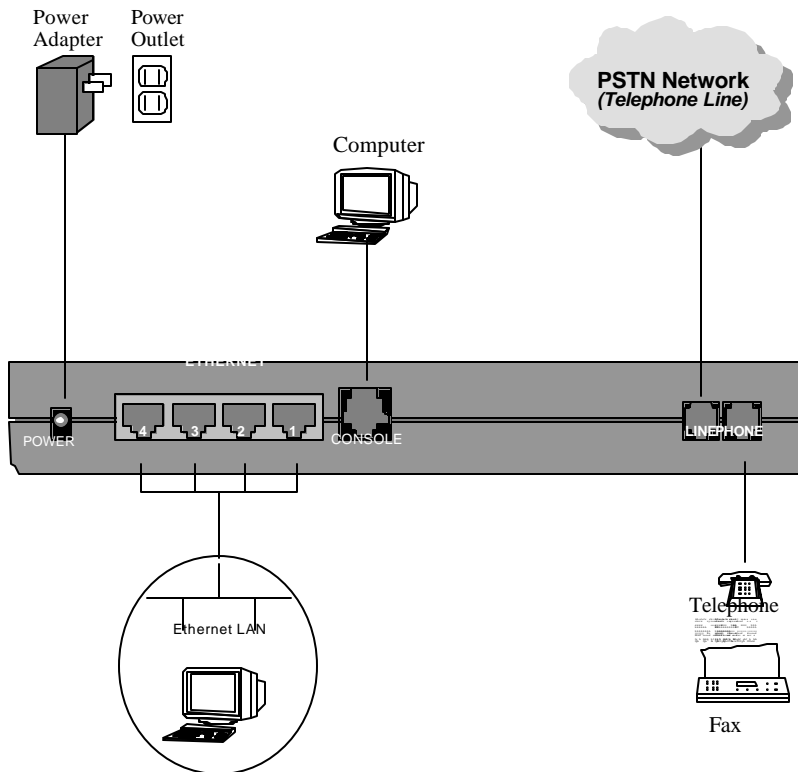
The *Prestige*'s DHCP server is enabled by default. The server has a pool of 32 IP addresses ranging from 192.168.1.33 to 192.168.1.64. To minimize your workload, we recommend that you leave the DHCP server enabled, unless you already have another DHCP server running or other specific reasons.

Chapter 2

Cabling & Installation

The following diagrams depict the cabling for the *Prestige*. After you have completed the cabling, proceed to *Chapter 3: Windows 95 Quick Start* or *Chapter 4: Windows NT Quick Start*.

2.1 Prestige 100MH



Chapter 3

Windows 95 Quick Start

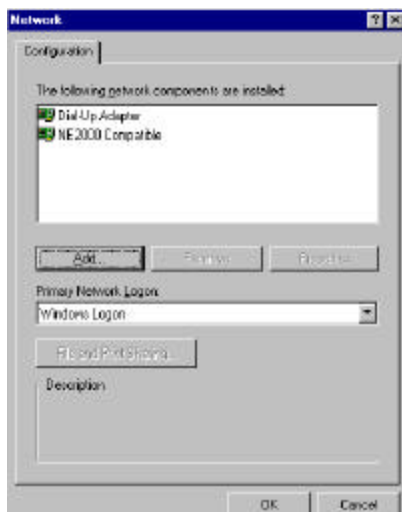
This chapter shows you the step-by-step instructions to configure your Windows 95 workstations for Internet access.

3.1 TCP/IP Installation

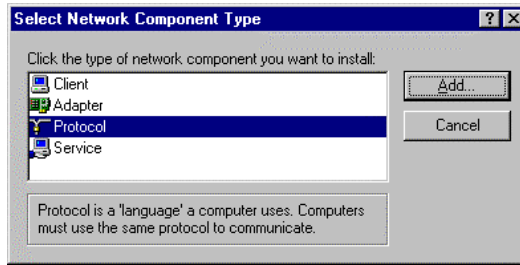
You must first install TCP/IP protocol on each Windows 95 workstation before you can use it to access the Internet. If you have already installed TCP/IP, skip to the *TCP/IP Configuration* section on page 9; otherwise, follow these steps:

Step 1. From the **Start Menu**, select **Settings** then open **Control Panel**.

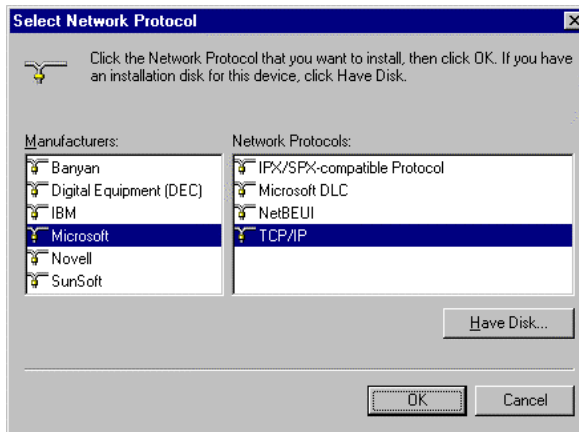
Step 2. Double-click the **Network** icon to open the **Network** control panel.



Step 3. Click the **Add** button in the **Network** control panel to add a new protocol.



Step 4. Select the *Protocol* item and click *Add*.



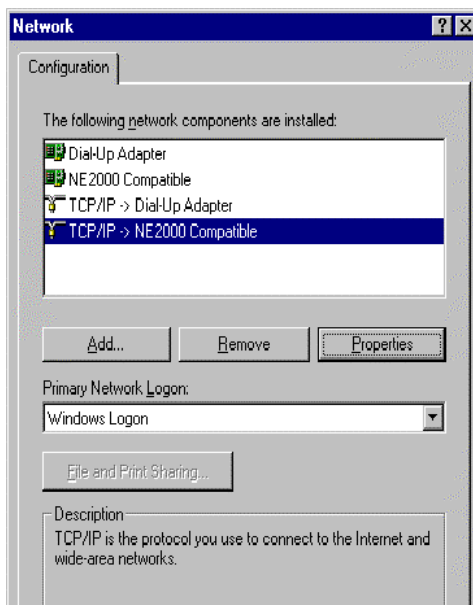
Step 5. Choose *Microsoft* from the *Manufacturers*, and *TCP/IP* from the *Network Protocols* Then click *OK*.

This will install the TCP/IP protocol on your workstation.

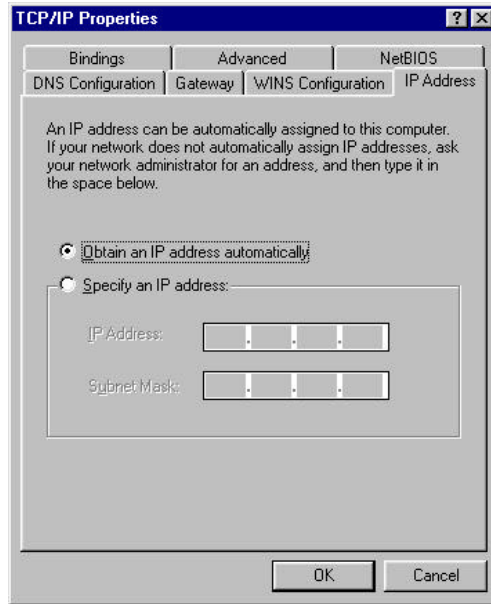
3.2 TCP/IP Configuration

Follow these steps to setup your TCP/IP configuration for Windows 95.

Step 1. From the **Start Menu**, select **Settings** then open **Control Panel**.



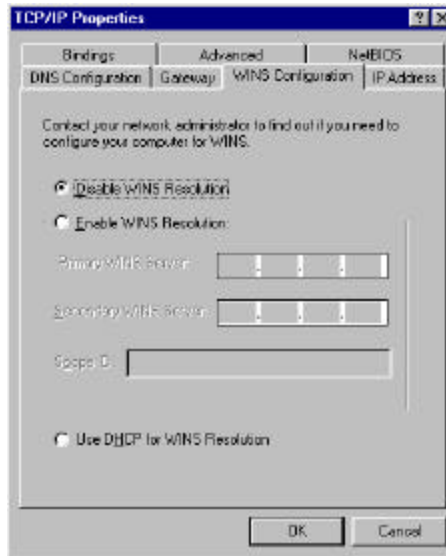
Step 2. Double-click the **Network** icon to open the **Network** control panel. A list of installed components is displayed. Click on **TCP/IP** selection for the installed network card to highlight as shown below, then click the **Properties** button.



Step 3. The *TCP/IP Properties* dialog with *IP Address* tab will appear as shown below.

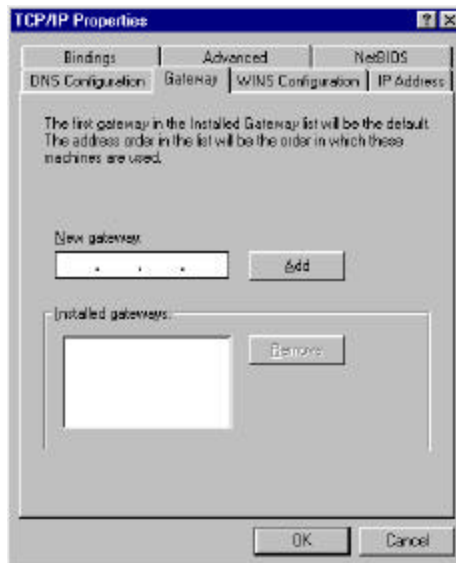
Step 4. Select *Obtain an IP address automatically* if your ISP did not assign you a block of registered IP addresses (most cases); otherwise, select *Specify an IP address* and enter the IP address and subnet mask for this workstation from the block provided by your ISP.

Note: Do not assign arbitrary IP address and subnet mask to your workstations. Otherwise, you will not be able to access the Internet.

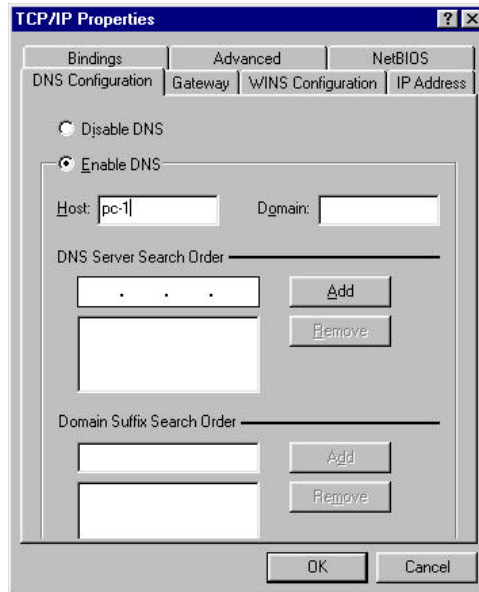


Step 5. Select the **WINS Configuration** tab, and click **Disable WINS Resolution**.

Step 6. On the **Gateway** tab, highlight any installed gateways and click the **Remove** button until there are none listed.



- Step 7.** On the **DNS Configuration** tab, select **Enable DNS**. Enter a unique name for the workstation in the **Host** box. Enter your domain name in the **Domain** box if you have one. This field is optional and can be left blank. Leave the **DNS Server Search Order** box blank if you plan to get the DNS server address(es) from a DHCP server. Otherwise enter the DNS server address of your ISP in the third box and click **Add**. Click **OK** to save and close **TCP/IP** dialog.



- Step 8.** Now Click **OK** to close the **Network** control panel. You may be prompted to insert your Windows 95 CD or disks. When the drivers are updated, you may be prompted to restart the system. Make sure the *Prestige* is powered on before clicking **yes** and allow the workstation to restart.
- Step 9.** From the Windows 95 Start Menu, choose **RUN**. Then type **"winipcfg"** and click **OK**. This will show the IP address of your workstation. If no address is shown, verify your cabling.

Repeat the above steps for each Windows 95 workstation on your LAN.

Chapter 4

Windows NT Quick Start

This chapter shows you the step-by-step instructions to configure your Windows NT workstations for Internet access.

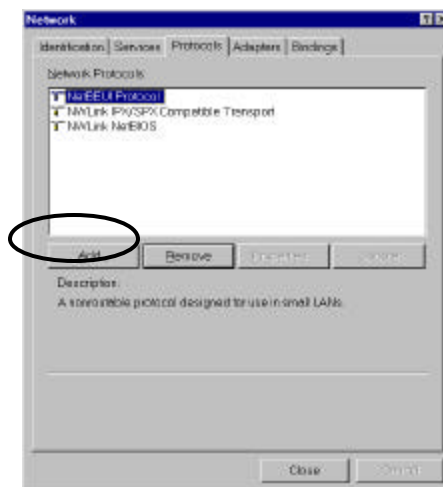
4.1 TCP/IP Installation

You must first install TCP/IP protocol on each Windows NT workstation before you can use it to access the Internet. If you have already installed TCP/IP, skip to the *TCP/IP Configuration* section on page 15; otherwise, follow these steps:

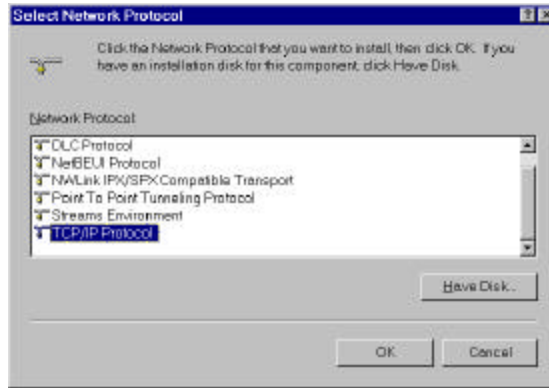
Step 1. From the **Start Menu**, select **Settings** then open **Control Panel**.

Step 2. Double-click the **Network** icon to open the **Network** control panel.

Step 3. Select the **Protocol** tab, then click the **Add...** button.



Step 4. Choose **TCP/IP Protocol** from the **Network Protocol** list. Then click **OK**.



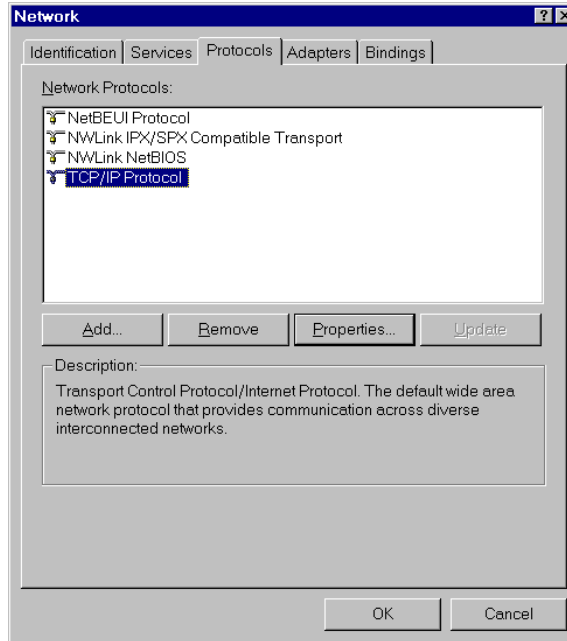
This will install the TCP/IP protocol on you workstation.

4.2 TCP/IP Configuration

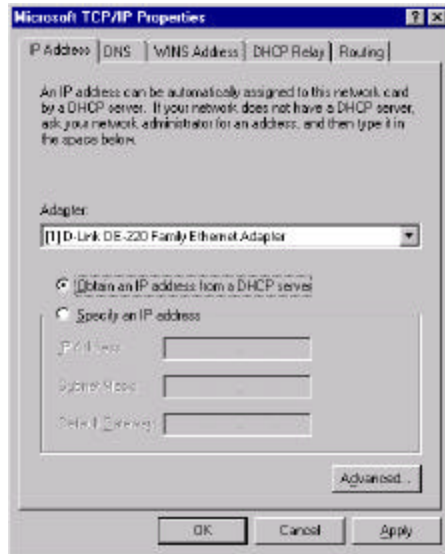
Follow these steps to setup your TCP/IP configuration for Windows NT.

Step 1. From the **Start Menu**, select **Settings** then open **Control Panel**.

Step 2. Double-click the **Network** icon to open the **Network** control panel.

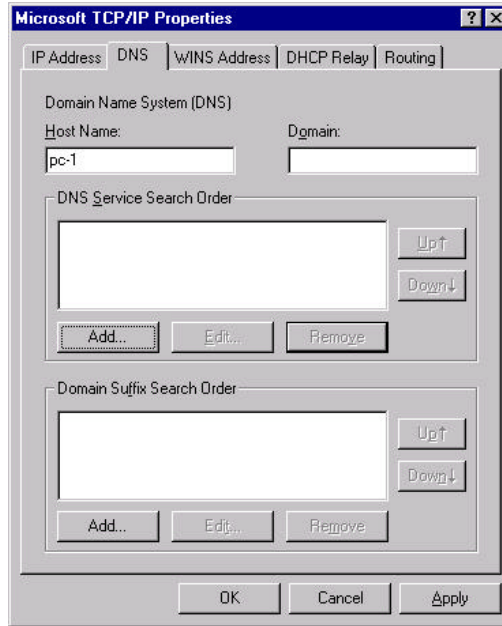


- Step 3.** Click the **Protocol**stab, select the **TCP/IP protocol**, and click the **Properties...** button to open the **Microsoft TCP/IP Properties** dialog.
- Step 4.** Select **Obtain an IP address automatically** if your ISP did not assign you a block of registered IP addresses (most cases). Otherwise, select **Specify an IP address** and enter the IP address and subnet mask for this workstation from the block provided by your ISP, and enter your *Prestige*'s IP address in **Default Gateway**.

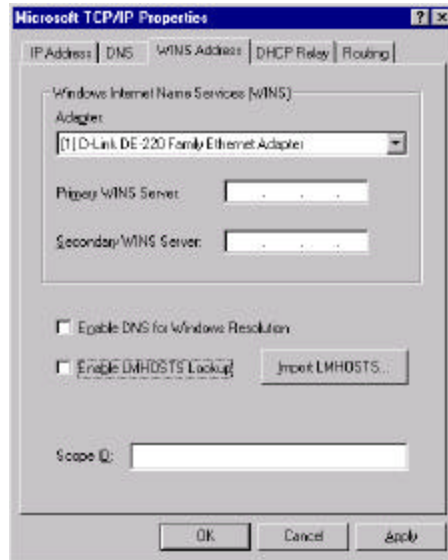


Note: Do not assign arbitrary IP address and subnet mask to your workstations. Otherwise, you will not be able to access the Internet.

Step 5. On the **DNS** tab, Enter a unique name for the workstation in the **Host Name** box. Enter your domain name in the **Domain** box if you have one. This field is optional and can be left blank. Make sure the **DNS Service Search Order** box is blank if you plan to get the DNS server address(es) from a DHCP server. Otherwise click **“Add...”** to enter the DNS server address(es) of your ISP.



Step 6. On the **WINS Address** tab, make sure the toggle button of **Enable DNS for Windows resolution** is not checked.



Step 7. Click on the **OK** button at the bottom to save and close the **TCP/IP Properties** dialog.

Step 8. Click on the **OK** button to save and close the **Network** control panel.

Repeat the above steps for each Windows NT workstation on your LAN.

Chapter 5

Prestige Web Configurator Setup

The *Prestige* Web Configurator (PWC) is a JAVA based system that provides you a quick, simple, and intuitive way to configure your *Prestige*. Using a “point-and-click” Web-based Graphical User Interface (GUI), you can configure, save, monitor, and diagnose your *Prestige* from any workstation on your LAN.

The PWC system consists of three components:

1. A browser, either Microsoft’s Internet Explorer 3.02 and above, or Netscape Navigator 3.0 and above.
2. Sun Microsystems’s JAVA Activator EA2 release or later.
3. The *Prestige* Web Configurator software.

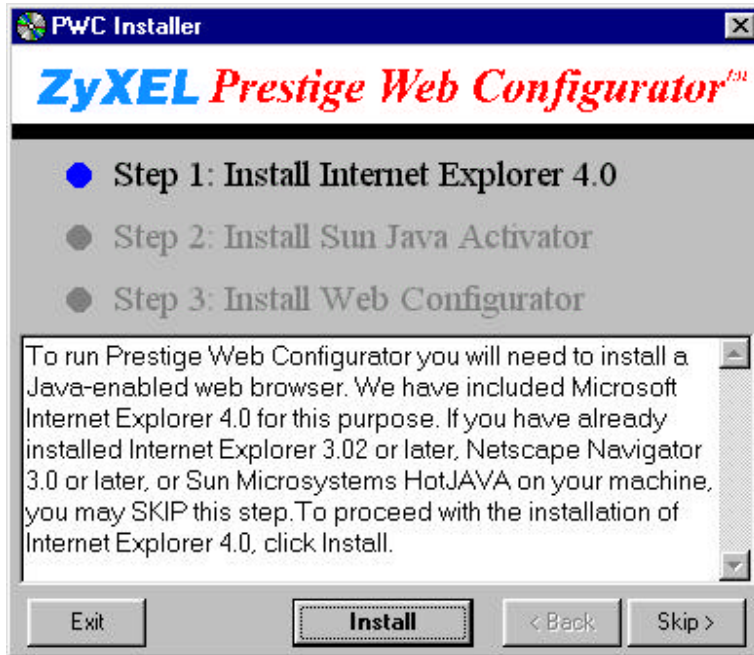
All three components must be installed on the workstation to run PWC.

5.1 Installing PWC Components

To install the *Prestige* Web Configurator components:

Step 1. Insert the *Prestige* Web Configurator installation CD into your CD-ROM drive.

The ZyXEL CD Installer Program should start automatically after you insert the CD. If it does not, run **Startup.exe** located in the CD’s root directory.



***Note:** The ZyXEL CD Installer Program (Startup.exe) requires the Microsoft® Visual Basic 5 Runtime libraries.*

On some systems you may get the message "Error Starting Program" when trying to start the CD-ROM Installer. If this should occur, use the Windows Explorer to open the "VB5Run" folder on the CD, then double-click the "Setup" Icon to run Setup.exe.

This program will update your system files, install the VB5 runtime DLLs, and create a "VB5About" shortcut in the Programs folder in the Start menu. This program gives you the information about the system files that setup.exe has installed. You may safely uninstall VB5About with the "Add/Remove Programs" Control Panel after you have completed PWC installation.

Step 2. Use the **Skip** and **Back** buttons to select the PWC components that have not been installed. Click the **Install** button to install the selected component.

Follow the on-screen instructions for each package.

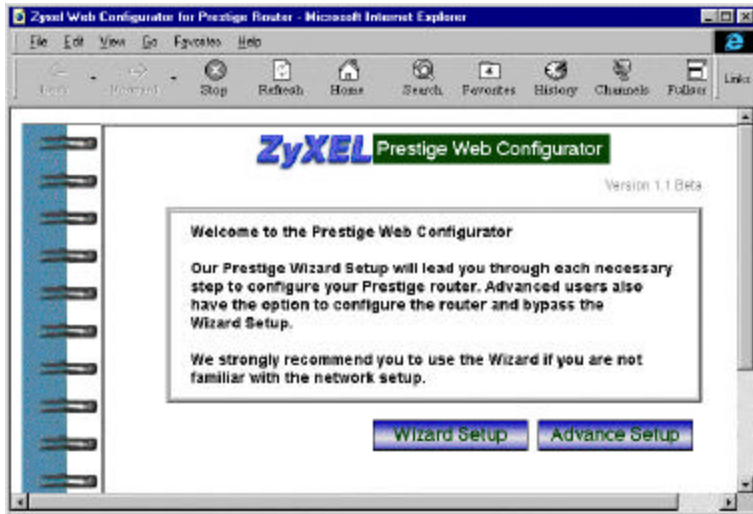
- Step 3.** After you have completed installing all the required components, click the **Exit** button.
- Step 4.** Run the JAVA Activator Control Panel, which is located in the JAVA Activator 1.1 EA2 folder of your Start/Programs group.



- Step 5.** Make sure the settings match those in the following figure and click **OK**.

5.2 Starting the Prestige Web Configurator

- Step 1.** To start PWC, select Start→. Programs→. ZyXEL→. *Prestige* Web Configurator. Your web browser will start and show PWC's welcome page.



Step 2. Click the **Wizard Setup** button at the bottom of the welcome screen to start down the Wizard Setup path.

The **Wizard Setup** will guide you through the steps necessary to configure your *Prestige* for Internet access. If this is your first experience with a *Prestige*, you should begin with the Wizard Setup.

The Wizard Setup is designed to be straight-forward and incorporates detailed on-screen information every step of the way. You should have no problems completing your *Prestige* setup by following the on-screen directions. Should you have any difficulties, detailed information on the Wizard Setup is available in “*Prestige* Web Configurator User’s Guide”.

Customer Support ZyXEL Prestige 100MH

If you have questions about your ZyXEL products or desire assistance, contact ZyXEL Communications Corporation in one of the following ways.

Contacting ZyXEL

E-mail	Technical Support	Support@zyxel.com in North America Support@zyxel.com.tw outside of the US.
E-mail	Sales	Sales@zyxel.com in North America Sales@zyxel.com.tw outside of the US.
Web Site	Product Information	www.zyxel.com ZyXEL's Internet Site.
Phone	North America	(714) 693-0808 (8:00 to 5:00 PM PST)
	Outside North America	+886-3-5782439 Ext.:266 (8:00 to 5:00 PM local)
Fax	North America	(714) 693-8811
	Outside North America	+886-3-5782439
FTP File Downloads	North America	ftp.zyxel.com (Software and ROM upgrades)
	Europe	ftp.zyxel.co.at (Software and ROM upgrades)

Mailing Address

ZyXEL Communications Corporation

6, Innovation Road II
Science-Based Industrial Park
Hsinchu, Taiwan 300, R.O.C.

ZyXEL Communications, Inc.

4920 E. La Palma Avenue
Anaheim, CA 92807, U.S.A.

ZyXEL

TOTAL INTERNET ACCESS SOLUTION