

Omni 56K USB Modem

Quick Start Guide

Contents

1. MAKING CONNECTION VIA USB	2
HARDWARE INSTALLATION	2
SOFTWARE INSTALLATION FOR WINDOWS® OS	3
INSTALL USB DRIVER AND PPP SETUP FOR MAC OS	6
2. BITWARE INSTALLATION.....	12
INSTALLING BITWARE	12

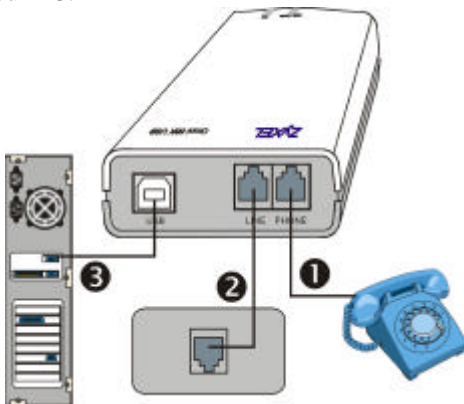
ZyXEL

TOTAL INTERNET ACCESS SOLUTION

1. Making Connection via USB

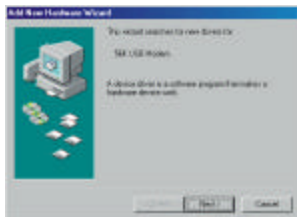
Hardware Installation

- ❶ Connect your modem to your analog phone or fax.
- ❷ Use the phone cord included to connect to the phone jack on the wall.
- ❸ Plug one end of your USB cable to your modem and the other end to an available USB port on your PC.



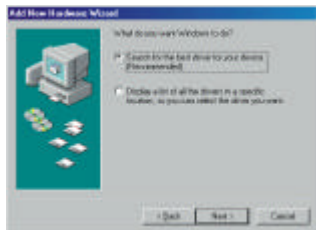
Software Installation for Windows® OS

Follow the steps below to install your USB driver.

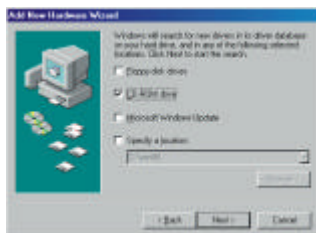


Step 1. Be sure your PC is already turned on before connecting the USB cable from your modem to your PC. The plug and play function of Windows® 98 detects your new device and shows an installation wizard as shown on the left. Click **Next** to continue.

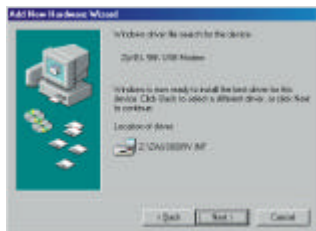
NOTE: If your Windows® system does not detect your new device automatically, you may unplug the USB cable and reboot your Windows® system, then try Step 1 above again.



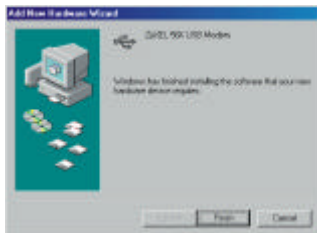
Step 2. Click **Next** to accept the default selection.



Step 3. Insert the CD-ROM disc included into your CD-ROM drive, select **CD-ROM drive** and then click **Next**.



Step 4. The installation wizard has found the location of your USB driver. Click **Next** to continue and Windows® will copy the driver files into your system as well as build the driver information database.



Step 5. The ZyXEL USB modem has been successfully installed on your computer. Click **Finish**, then follow the wizard to complete the driver installation.

For more information on how to upgrade your modem's firmware, please refer to the *User's Guide for ZyXEL Omni 56K USB Modem*.

Install USB Driver and PPP Setup for Mac OS

This section provides step by step procedures to install the USB device driver and setup PPP on the Mac OS.

Install USB Driver for Mac OS

Omni56K_USB_Installer, a MindVision VISE Installer, is used to install ZyXEL Omni 56K USB device driver on your Macintosh. Perform the following procedure to install the USB device driver on your Macintosh.

Step 1. Be sure your Mac is turned on.

Step 2. Insert the CD-ROM disc attached with your modem device into your CD-ROM drive.
You will see the following icon:



Omni 56K USB Installer

Step 3. Plug the USB connector of your Omni 56K USB into any one of your devices with a USB port, such as your computer, display monitor, or keyboard, etc.

Step 4. Double click on the **Omni56K_USB_Installer** icon. Then, click **Continue**.

Step 5. Click on the **Install** button. The ZyXEL USB device driver will be installed in the extension folder of the system folder.



Step 6. You are required to restart your computer to complete the installation process by clicking on **Continue**.



Step 7. Click on **Restart** to reboot your Macintosh.



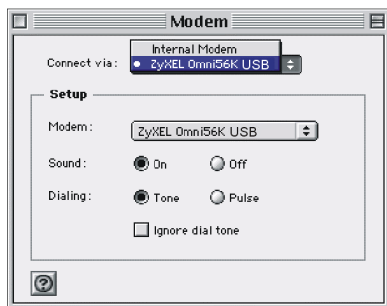
You have finished the USB device driver installation for your Mac OS. The following section shows you how to set up a PPP connection for Internet access.

OT/PPP Setup for Mac OS

Before using OT/PPP, you must use the **Control Panels** to set up modem, TCP/IP and Remote Access (or PPP).

Setup the Modem Control Panel

Step 1. Choose **Control Panels** from the Apple Menu and open the **Modem Control Panel**. You will see a window as shown:



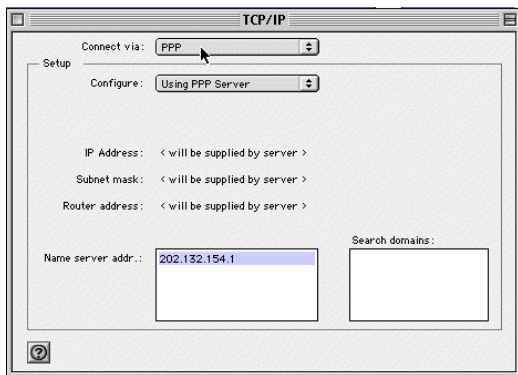
Step 2. Choose the port to the **ZyXEL Omni 56K USB** from the **Connect via** pop-up menu.

Step 3. Choose **ZyXEL Omni 56K USB** from the **Modem** pop-up menu.

Step 4. Save and close.

TCP/IP Setup for PPP

Step 1. Choose **Control Panels** from the Apple Menu and open the **TCP/IP** control panel. You will see a window as shown:



- Step 2.** Choose **PPP** from the **Connect via** pop-up menu.
- Step 3.** Choose your configuration method from the **Configure** pop-up menu. For example, **Using PPP Server**.
- Step 4.** The most common selection is **Using PPP Server** that causes OT/PPP to request IP address from the server when it connects.
- Step 5.** Enter **Name server addresses**.
- Step 6.** Save and close.

Remote Access Setup (or PPP)

Step 1. Choose **Control Panels** from Apple Menu and open the **Remote Access** (or **PPP**) control panel. A window appears:



Step 2. Click **Setup** to show this panel's screen.

Step 3. Click on **Guest** or **Registered User**.

Step 4. Enter your PPP user **Name** and **Password** in the text boxes.

Step 5. Enter your ISP's telephone number in the **Number** text box.

Click **Connect**. This will start a dial up and make an OT/PPP connection.

2. Bitware Installation

The Bitware application is contained in the CD-ROM disc that came with your modem package. To install Bitware, insert the CD-ROM disc into your CD-ROM drive. Then, proceed with the following steps.

Installing Bitware

- Step 1.** Use **windows®** to select your CD-ROM drive, then double-click on the **Msetup.exe** icon/filename as shown.



The following screen appears:



Step 2. Choose the Bitware program from the **Product** list-box, and select your Windows® system and language on the right side, then click on **Install**. Follow the wizard to complete the installation process.