

# *ZyAIR G-110*

*802.11g Wireless CardBus Card*

## *Quick Installation Guide*

Version 1.10

May 2004



## Important Note

### **Federal Communications Commission (FCC) Interference Statement**

The 802.11g Wireless LAN Adapter has been tested to the FCC exposure requirements (Specific Absorption Rate).

The equipment complies with FCC RF radiation exposure limits set forth for an uncontrolled environment, under 47 CFR 2.1093 paragraph (d) (2).

This Transmitter must not be co-located or operating in conjunction with any other antenna or transmitter.

Refer to the User's Guide for general FCC statements.

### **Procedure to View a Product's Certification(s)**

1. Go to [www.zyxel.com](http://www.zyxel.com)
2. Select your product from the drop-down list box on the ZyXEL home page to go to that product's page.
3. Select the certification you wish to view from this page.

## About Your ZyAIR

The ZyAIR is an IEEE 802.11g compliant wireless LAN PC card that fits into any CardBus slot. With the ZyAIR, you can enjoy the wireless mobility within the coverage area. The IEEE 802.11g technology provides greater range and offers transmission rate at up to 54 Mbps.

# 1. Installation Requirements

Before installation, make sure you have the following requirements.

- Pentium II 300MHz or above
- A minimum of 6 MB available hard disk space
- A minimum of 32 MB RAM
- A CD-ROM drive
- A CardBus slot
- Windows 98 SE/Me/2000/XP
- Windows 98 SE users may need the Windows 98 SE CD

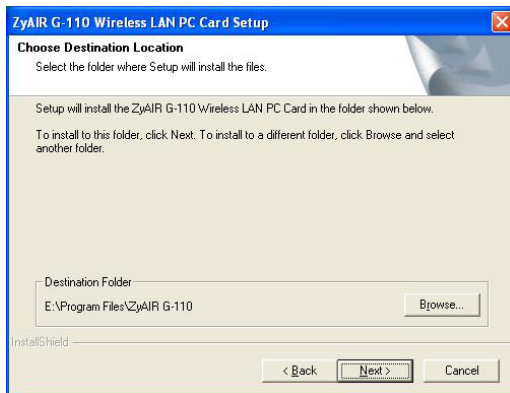
# 2. ZyAIR Utility and Hardware Installation

The installation procedures are similar for all supported Windows versions. Windows XP screen shots are shown unless otherwise specified.

**DO NOT insert the ZyAIR at this point.**

1. Insert the support CD into the CD-ROM drive on your computer. The CD auto runs. Otherwise, locate and double-click on **setup.exe**. A Welcome screen displays. Click **Next**.

2. Click **Next** to accept the default file location or click **Browse** to select an alternate folder.



3. Windows 98 SE/Me: Click **Finish** to restart the computer.
4. Locate an available CardBus slot on the computer.
5. With the pin connectors facing the slot and the LED side facing up, slide the ZyAIR into the slot. The LEDs turn on if the ZyAIR is properly inserted.



**Never bend, force or twist the ZyAIR into the slot.**

6. Windows 2000: If a warning window displays, click **Yes**.

7. Windows XP: A **Found New Hardware Wizard** windows displays. Select **Install the software automatically (recommended)** and click **Next**.
8. Windows XP: If a warning window displays, click **Continue Anyway**. Then click **Finish** to complete the installation process.

After you install the ZyAIR Utility and insert the ZyAIR, an icon



**If the ZyAIR Utility icon displays, the ZyAIR is installed properly. Refer to the *ZyAIR Utility User's Guide* to configure the ZyAIR.**

## LED Display



The following table describes the LEDs on the ZyAIR.

LED	COLOR	STATUS	DESCRIPTION
ACT	Blue	Blinking	The ZyAIR is receiving or sending data.
		Off	The ZyAIR is not receiving or sending data.
LINK	Blue	On	The ZyAIR has a connection to a wireless LAN.
		Blinking	The ZyAIR is connecting to a wireless LAN.
		Off	The ZyAIR is not connected to a wireless LAN or not receiving power.

## External Antenna Installation

1. Remove the protective cap from the ZyAIR.
2. Connect one end of the antenna converter cable to the external antenna connector on the ZyAIR.
3. Connect the other end of the converter cable to the Reverse-SMA plug of the external antenna. (It is recommended you use ZyXEL's external antenna series.)



## Troubleshooting

PROBLEM	CORRECTIVE ACTION
Windows does not auto-detect the ZyAIR.	Make sure the ZyAIR is inserted into the computer CardBus slot properly and then restart your computer. Check the LEDs on the ZyAIR.
	Perform a hardware scan by clicking <b>Start, Settings, Control Panel</b> and double-clicking <b>Add/Remove Hardware</b> . (Steps may vary depending on the version of Windows). Follow the on-screen instructions to search for the ZyAIR and install the driver.
	Check for possible hardware conflicts. In Windows, click <b>Start, Settings, Control Panel, System, Hardware</b> and then click <b>Device Manager</b> . Verify the status of the ZyAIR under <b>Network Adapter</b> . (Steps may vary depending on the version of Windows).
	Install the ZyAIR in another computer. If the error persists, you may have a hardware problem. In this case, you should contact your local vendor.